

Pedal Activated Sanitiser Station

Instruction Sheet

2 minutes setup | 1 person assembly | No tools required

Parts/Hardware

1. Main tube



Countersunk Bolt x 1



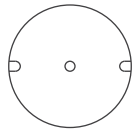
2. Beam



3. Pedal



4. Base Plate



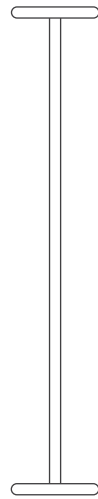
6. Top Plate



Nut & Bolt x 2



5. Piston



5mm Allen Key



Hands Free



NZ Made



Stainless Steel



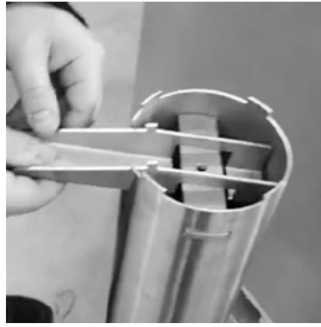
Secure

Assembly Instructions



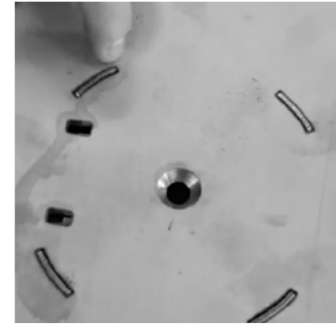
Step One

- Turn tube upside down.
- Slot beam across tube.



Step Two

- Fit the foot pedal onto the beam.



Step Three

- Place the base plate on.
- Ensure the metal tags & pedal slots into place.



Step Four

- Screw in countersunk bolt.
- Tighten with Allen Key.



Step Five

- Stand up correct way.
- Place piston inside tube.



Step Six

- Insert Hand Sanitiser Dispenser.



Step Seven

- Slot top plate into place.



Step Eight

- Secure top plate in place with nut & bolt.

Step Nine

- It is recommended to fix the stand to a solid platform with the two anchor bolts through the slots in the base.

Professional advice and assistance is recommended for this step.