



EQMINDUSTRIAL

Optimising Performance



MOVE

Meat & Seafood Maintenance Guide



WHY EQM?

At EQM we're focused on optimising your equipment's performance.

Provider of the complete service:

- A wide and innovative product range
- Componentry or assembled products
- New technology discovered and introduced
- Turnkey, easy-to-install systems
- Extensive stock available
- Prompt and flexible delivery service
- Parts and service back up



30 YEARS OF HISTORY

In 1990 the company began life as Equipment Market, dealing in second-hand power transmission, food handling and packhouse conveying equipment. The gear was mostly mechanical back in those days, with lots of moving parts. Anthony Bloxham began working for the company in 1993.

In 1995 David Bloxham, Anthony's father, bought the business and in 1998 brother Tim also joined the company. As technology developed, so did the range of equipment available. By 2006 the company began importing new gearboxes and motors from Italy to meet growing demand for a broader range of quality geardrives and equipment.

In 2010 the business rebranded to EQM Industrial. This reflected the major change in focus to that of a new equipment supplier rather than used. In 2012 customisation of conveyor systems became a speciality for the team and their technical abilities really came to the fore, providing bespoke systems that delivered and optimised customers production.

Another big step forward came in 2015 with the consolidation of the product range into EQM Drive, EQM Move and EQM Pack. This enabled clients to more easily identify the right products and their relevance to what they were manufacturing or processing.

In 2017, a visit to Fruit Logistica in Germany identified big developments in turnkey solutions for fruit packing lines, EQM became the NZ sales agent for Unitec Systems.

Move forward to today and EQM Industrial continues to thrive and develop robust, innovative, customised solutions for their broad customer base.

OUR VISION

To be recognised and in demand in New Zealand as specialists in industrial equipment and power transmission components.

OUR MISSION

- Motivate clients to buy now
- Motivate clients to refer us to others
- To be known and in demand as a 'one-stop shop' specialist advisors / consultants
- Strengthen partnerships for growth
- Helping to deliver food safety outcomes
- Support our communities

WE HAVE PRODUCTS ACROSS THREE AREAS

DRIVE

Where OEM's, Engineers, manufacturers and factories find all kinds of simple and complex power transmission solutions.

MOVE

Our conveyors and componentry help manufacturers and packhouses to reduce cost of production by streamlining processes and driving productivity.

PACK

Fruit & Vegetable Packing lines and equipment that efficiently transforms the harvest into highly presentable retail ready export quality produce with minimal waste.

MEAT & SEAFOOD MAINTENANCE GUIDE INDEX

CONVEYOR DRIVE UPGRADE / REPLACEMENTS

- i. Hygiene Washdown Geardrives - Performance Line 3
- i. Cleangeartech Full Stainless Steel iSeries 3
- iii. Cleangeartech Treated Aluminium Z Series 3
- iv. Motorised Drive Drums 3

GEARBOX REQUEST FORM 4

CONVEYOR UPGRADE REPAIR KITS

- i. Thermoplastic Housings 5
- ii. Stainless Steel UC Bearings 5
- iii. Stainless Steel Ball Bearings 5
- iv. Stainless Steel Chain 5

BEARING UNIT IDENTIFICATION 6

BAND DRIVEN ROLLER COMPONENTS

- i. Lineshaft Drive and Slave Bands 7
- ii. Drive Spools and Cliplocks 7
- iii. Bearings and Housings 7
- iv. Universal Joints 7
- v. Universal Joint Guard 8
- vi. Lineshaft Couplings 8

PLASTIC CONVEYOR CHAIN AND ROLLER ENDCAPS

- i. Thermoplastic Dyno Chain and Sprockets 8
- ii. Roller Endcaps and Bearings 8

STM EPOXY COATED GEARDRIVES - EFFECTIVE LINE 9

REPLACEMENT ROLLERS 9

ROLLER ORDER / QUOTE FORM 10



CONVEYOR DRIVE UPGRADE / REPLACEMENTS

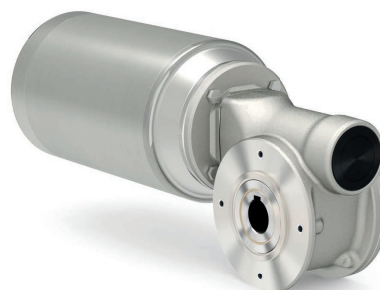
PERFORMANCE LINE

Hygiene Washdown Geardrives – Performance Line

- IP69k Certified
- Full range of accessories
- No paint flaking
- Worm & Helical Bevel

Cleangeartech Full Stainless Steel iSeries

Type	Torque (Nm)	Hollow shaft (mm)	Max kW Input
I30	21	14mm	0.09kW-0.18kW
I45	41	18mm	0.09kW-0.37kW
I50	72	25mm	0.12kW-0.75kW
I63	147	25mm	0.37kW-1.50kW
I85	347	35mm	0.55kW-4.00kW
I110	651	42mm	1.1kW-4.00kW

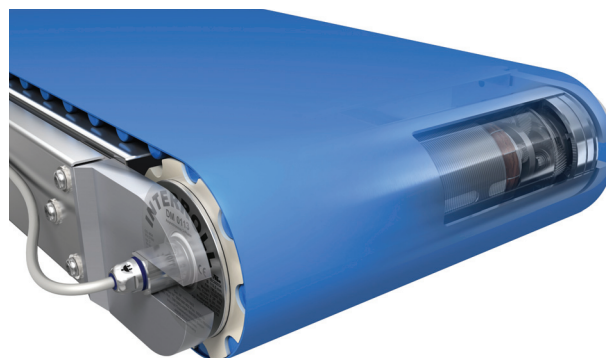


Cleangeartech Treated Aluminium Z Series

Type	Torque (Nm)	Hollow shaft (mm)	Max kW Input
Z 30	21	14mm	0.09kW-0.18kW
Z 45	41	18mm	0.09kW-0.37kW
Z 50	72	20mm 25mm	0.12kW-0.75kW
Z 63	147	25mm	0.37kW-1.50kW
Z 85	347	35mm	0.55kW-4.00kW

Motorised Drive Drums

- Stainless steel, anodised aluminium or zinc plated options
- Wide range of diameters
- Made to suit your application



GEARBOX SPECIFICATION

Please record all the details below to request a quote

CUSTOMER DETAILS

Contact person: _____

Company name: _____ Phone: _____

Email: _____

Price Quoted: _____ Qty Required: _____

SPECIFICATIONS

Brand / Type: _____

Ratio / RPM: _____ Input KW: _____

Input Flange diameter: _____ Input Shaft diameter: _____

Style

☐ Right Angle

☐ Inline

☐ Parallel Shaft

☐ Planetary

☐ Other _____

Output Shaft Size: _____

Mounting

☐ With Feet

☐ With P-Covers

☐ Torque Arm

☐ Output Flange

☐ Hollow Shaft

☐ Other _____



When you have copied and filled out, please
email or fax this form to EQM Industrial
Ph: 0800 147 847 | Fax: 06 878 8472
Email: sales@eqm.co.nz

CONVEYOR UPGRADE REPAIR KITS

THERMOPLASTIC HOUSINGS

- Full range of sizes & types in stock
- Hygienic & safe
- Cap seals & back seals
- White and black housings available



STAINLESS STEEL UC BEARINGS

- Full range available in stock
- Competitively priced
- FDA Approval
- Grubscrew, essentric lock and flush back available



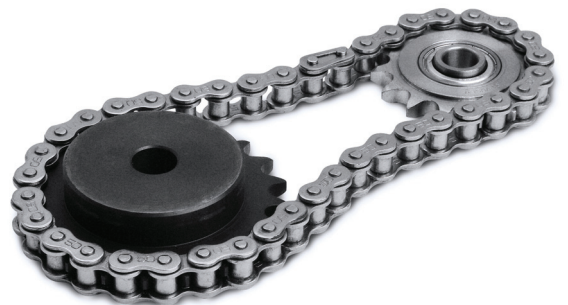
STAINLESS STEEL BALL BEARINGS

- For longer life
- Full range of sizes
- Check out our excellent prices
- Open and sealed



STAINLESS STEEL CHAIN

- Full range available
- British Standard & American ASA sizing
- Sprockets to suit
- Tensioner idler sprockets



ARE YOU LOOKING FOR

Pricing?

Quality?

Service?

EQM Industrial now stock a wide range of quality bearings to meet your requirements supported with **LEGENDARY** service and after sales commitment to our clients

BEARING UNIT IDENTIFICATION

EQM	ASAHI	SKF	NSK	NACHI	KOYO	FYH	NTN	FAG
UC	UC	YAR	UC	UC	UC	UC	UC	562
SA	KH	YET	EN/AEL	KH	SA	SA	AEL	162
NA	UG	YEL	EW/UEL	UG	NA	NA	UEL	362
KHR	KHR		ENR/AELS		SAA	SAA	AELS	262
SER	SER		UR/UCS	SER	ER	ER	UCS	
B	B	YAT	UB/AS	B	SB	SBB	AS	
UK	UK	YSA	UK	UK	UK	UK	UK	562K
UKX	UKX		UKX	UKX	UKX	UKX	UKX	
UCX	UCX		UCX	UCX	UCX	UCX	UCX	
P	P	SY	P	P	P	P	P	P
PX	PX		PX	PX	PX	PX	PX	
F	F	FY	F	F	F	F	F	F
FX	FX		FX	FX	FX	FX	FX	
FL	FL	FYTB	FL	FL	FL	FL	FL	
LF	LFL		LF/FB	LFL	LF	LF	FB	
T	T	TU	T	T	T	T	T	T
C	C		C	C	C	C	C	
PH	PH		PH	PH	PH	PH	HP	
PA	PA	SYF	PA	PA	PA	PA	UP	PA
FA	FA		FA	FA	FA	FA	FA	
FC	FC	FYC	FC	FC	FC	FC	FC	FC
FCX	FCX		FCX	FCX	FCX	FCX	FCX	
FK	FK		FK	FK	FB	FK	FH	
HA	ECH		EH	ECH	HA	HA	HB	



Cast Iron P Housing



Cast Iron F Housing



Cast Iron FL Housing



Cast Iron FK Housing



Cast Iron T Housing



Cast Iron PA Housing



Cast Iron FC Housing



Cast Iron FA Housing



Cast Iron LF Housing



Plastic PW Housing



Plastic FW Housing



Plastic FLW Housing



Plastic FKW Housing



Plastic TW Housing



Plastic PAW Housing



SA Bearings – Eccentric Lock



SSUC Stainless Steel Bearing



UC Triple Sealed Bearings

BAND DRIVEN ROLLER COMPONENTS

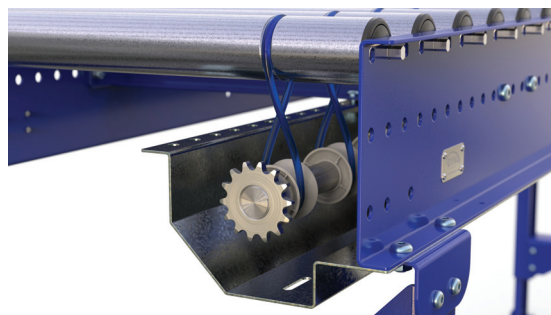
LINESHAFT DRIVE AND SLAVE BANDS

DB73 – 73mm dia ID – used to link roller to roller at 64mm pitch

DB90 – 90mm dia ID – used to link roller to roller at 96mm pitch

DB96 – 96mm dia ID – used between main line shaft to roller

DBE – Emergency drive band



DRIVE SPOOLS AND CLIPLOCKS

DS – Line shaft drive spools – to suit 25mm dia shaft

DSS - Line shaft drive split spools – to suit 25mm dia shaft

CL – Line shaft clip locks – designed to lock spools for fixed direct drive to rollers

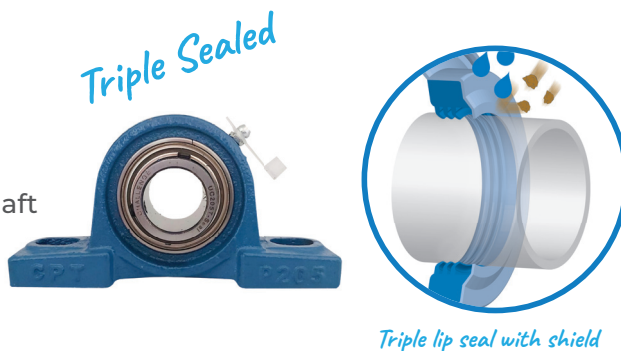
DSL – Line shaft large split spools – designed to crate gaps between cartons



BEARINGS AND HOUSINGS

UCP205 – Cast Housings & Bearings to suit 25mm line shaft

UC205 – Insert Bearings only to suit 25mm line shaft



UNIVERSAL JOINTS

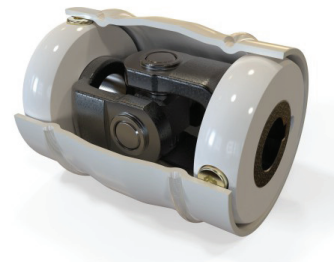
TZPUJ – Universal Joint for line shaft bends to suit 25mm shaft



BAND DRIVEN ROLLER COMPONENTS

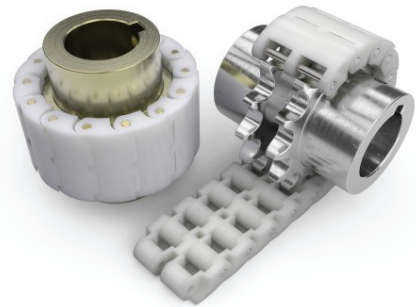
UNIVERSAL JOINT GUARD

TZPGUC – Greasable Universal Cover
Fits over standard 25mm universal joint
Health & Safety benefit



LINESHAFT COUPLINGS

TZPZPBC – zinc plated coupling c/w wrap around poly acetal chain



PLASTIC CONVEYOR CHAIN AND ROLLER ENDCAPS

THERMOPLASTIC DYNO CHAIN AND SPROCKETS

Dyno 600 Chain – 2.5" pitch

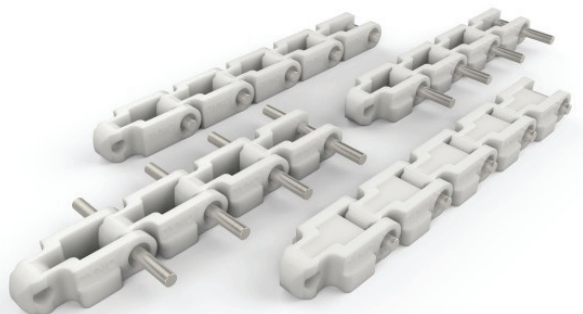
Dyno 300 Chain – 3" pitch

Extended Pin

Standard Short Pin

Dyno Chain Sprockets –

- Aluminium or polyethylene
- 6, 8 & 14 tooth
- Supplied blank (can be bored & keyed)



ROLLER ENDCAPS & BEARINGS

Plastic Bushed endcaps

Roller Bearings – large range available

Contact EQM for technical catalogue



STM EPOXY COATED GEARDRIVES

EFFECTIVE LINE

- Full range of sizes and types available
- Cost effective hygiene solution
- Colour of your choice
- Two pot paint system



Size	Torque (Nm)	Hollow shaft (mm)
40	40	18mm
50	80	25mm
63	145	25mm
75	255	28mm
85	415	35mm
110	640	42mm

REPLACEMENT ROLLERS

- Large range of sizes and types available
- See page 10 for our Roller Quote/Order Form



ROLLER ORDER / QUOTE FORM

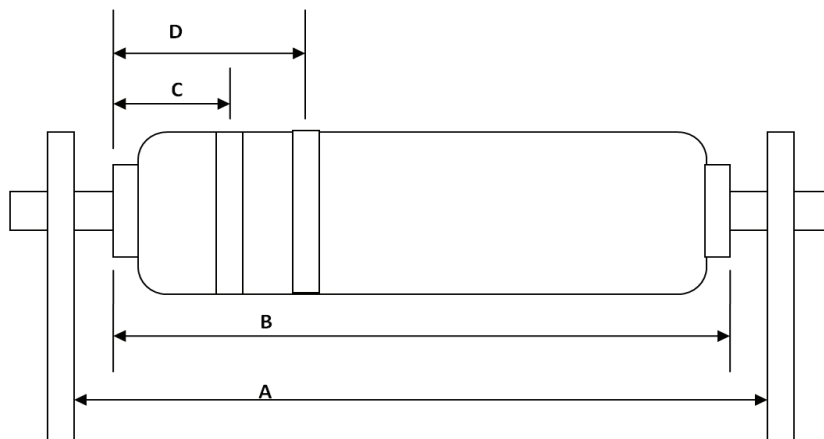
Please copy this form, fill out and send back to us

CUSTOMER DETAILS

Contact person: _____

Company name: _____ Phone: _____

Email: _____



ROLLER MEASUREMENTS

Roller Length

Inside Frame (A):		Over Bearing Length:		Groove Centres:	
A:		B:		C:	D

Tube Diameter (mm Ø)

20	25	32	42	50	60	76	89	114
----	----	----	----	----	----	----	----	-----

Shaft Diameter (mm Ø)

Round:									Hex:			Ali 'D':	Other:
6	8	9.5	10	11	12	13	16	20	8	11	16	11x8	

Roller & Shaft Material

Tube:				Shaft:			
Galvanised	Plastic	Stainless Steel		Galvanised	Aluminium	Stainless Steel	

Roller Bearings

Plastic:				Pressed Metal:		Precision:	
Bushed	Carbon	S/S	Precision	Galvanised		Steel	Stainless Steel

When you have copied and filled out, please
email or fax this form to EQM Industrial
Ph: 0800 147 847 | Fax: 06 878 8472
Email: sales@eqm.co.nz



EQMINDUSTRIAL
Optimising Performance

518 Omahu Road
PO Box 2162 Stortford Lodge
Hastings 4153
New Zealand

Freephone: 0800 147 847

Phone: +64 6 878 8475

Fax: +64 6 878 8472

Email: sales@eqm.co.nz

www.eqm.co.nz