



# Stainless Steel Hygienic Products Catalogue



# WHY EQM?

At EQM we're focused on optimising your equipment's performance.

## Provider of the complete service:

- A wide and innovative product range
- Componentry or assembled products
- New technology discovered and introduced
- Turnkey, easy-to-install systems
- Extensive stock available
- Prompt and flexible delivery service
- Parts and service back up



## 30 YEARS OF HISTORY

In 1990 the company began life as Equipment Market, dealing in second-hand power transmission, food handling and packhouse conveying equipment. The gear was mostly mechanical back in those days, with lots of moving parts. Anthony Bloxham began working for the company in 1993.

In 1995 David Bloxham, Anthony's father, bought the business and in 1998 brother Tim also joined the company. As technology developed, so did the range of equipment available. By 2006 the company began importing new gearboxes and motors from Italy to meet growing demand for a broader range of quality geardrives and equipment.

In 2010 the business rebranded to EQM Industrial. This reflected the major change in focus to that of a new equipment supplier rather than used. In 2012 customisation of conveyor systems became a speciality for the team and their technical abilities really came to the fore, providing bespoke systems that delivered and optimised customers production.

Another big step forward came in 2015 with the consolidation of the product range into EQM Drive, EQM Move and EQM Pack. This enabled clients to more easily identify the right products and their relevance to what they were manufacturing or processing.

In 2020 it became apparent that the food safety and human health was a leading consideration with the event of the pandemic. This sowed the seed for the launch of the EQM Hygiene brand in 2022 to consolidate EQM Industrial's position in the market as the specialist in hygienic washdown motors, gearboxes, bearings, hardware and more.

Move forward to today and EQM Industrial continues to thrive and develop robust, innovative, customised solutions for their broad customer base.

## OUR VISION

Where every engineer in NZ making and maintaining a conveyor or equipment buys all the design ideas, drives, bearings and components to complete the task at hand or planned.

## OUR MISSION

At EQM industrial our mission is to constantly search how we can do things better. By using our knowledge and our expertise to create better solutions. To implement better systems and process to ensure better delivery and stay ahead of in the industry to service our clients better.

## WE HAVE PRODUCTS ACROSS THREE AREAS

### DRIVE

Where OEM's, Engineers, manufacturers and factories find all kinds of simple and complex power transmission solutions.

### MOVE

Our conveyors and componentry help manufacturers and packhouses to reduce cost of production by streamlining processes and driving productivity.

### PACK

Fruit & Vegetable Packing lines and equipment that efficiently transforms the harvest into highly presentable retail ready export quality produce with minimal waste.



# CONTENTS

Why EQM? / 30 Years Of History / Our Vision / Our Mission	1
Overview	3-4
<b>HYGIENIC WASHDOWN GEARDRIVES</b>	
Stainless Steel Gearboxes	7
Hygienic Aluminium Gearboxes	7
Stainless Steel Electric Motors	8
Hygienic Aluminium Electric Motors	8
<b>STAINLESS STEEL HYGIENIC BEARING SYSTEM</b>	
Hygienic Line Ball Bearing Units	11
Hygienic Line Stainless Steel Bearing Units Properties	11
Hygienic Line Designs	12
DH LASS SB F 4 Hole SS Flanged Units	13
DH LASS SB FL 2 Hole SS Flanged Units	14
DH LASS SB FB 3 Hole SS Flanged Units	15
DH LASS Bearing Load Bearings	16
DH LASS Bus Spacers	17
Installation Guide	18
<b>STAINLESS STEEL HYGIENIC ELECTRICAL COMPONENTS</b>	
Stainless Steel Cable Glands	21
Stainless Steel Hygienic Electrical Enclosures	22
<b>STAINLESS STEEL HYGIENIC HARDWARE</b>	
Stainless Steel Nuts & Bolts	25
Stainless Steel U-Handles	27
Stainless Steel Star Knobs	28
Stainless Steel Three Lobe Knobs	29
Stainless Steel Four Lobe Knobs	30
Stainless Steel Waist Shaped Knobs	31
Stainless Steel Nut & Ring	32
<b>STAINLESS STEEL HYGIENIC LEVELLING FEET &amp; CASTORS</b>	
Hygienic Levelling Feet	35
Certified Hygienic Levelling Feet	36
Hygienic Levelling Castors	37
Certified Hygienic Castors	38
<b>STAINLESS STEEL AIR CIRCULATORS</b>	
Stainless Steel Wall Fans	41



Stainless Steel  
Hygienic Bolts & Nuts  
- see pages 25 & 26



Stainless Steel  
Geardrives  
- see pages 7 & 8



Stainless Steel  
Cable Glands  
- see page 21



Stainless Steel  
Hygienic Bearing System  
- see pages 11 -18





Stainless Steel  
U Handles  
- see page 27



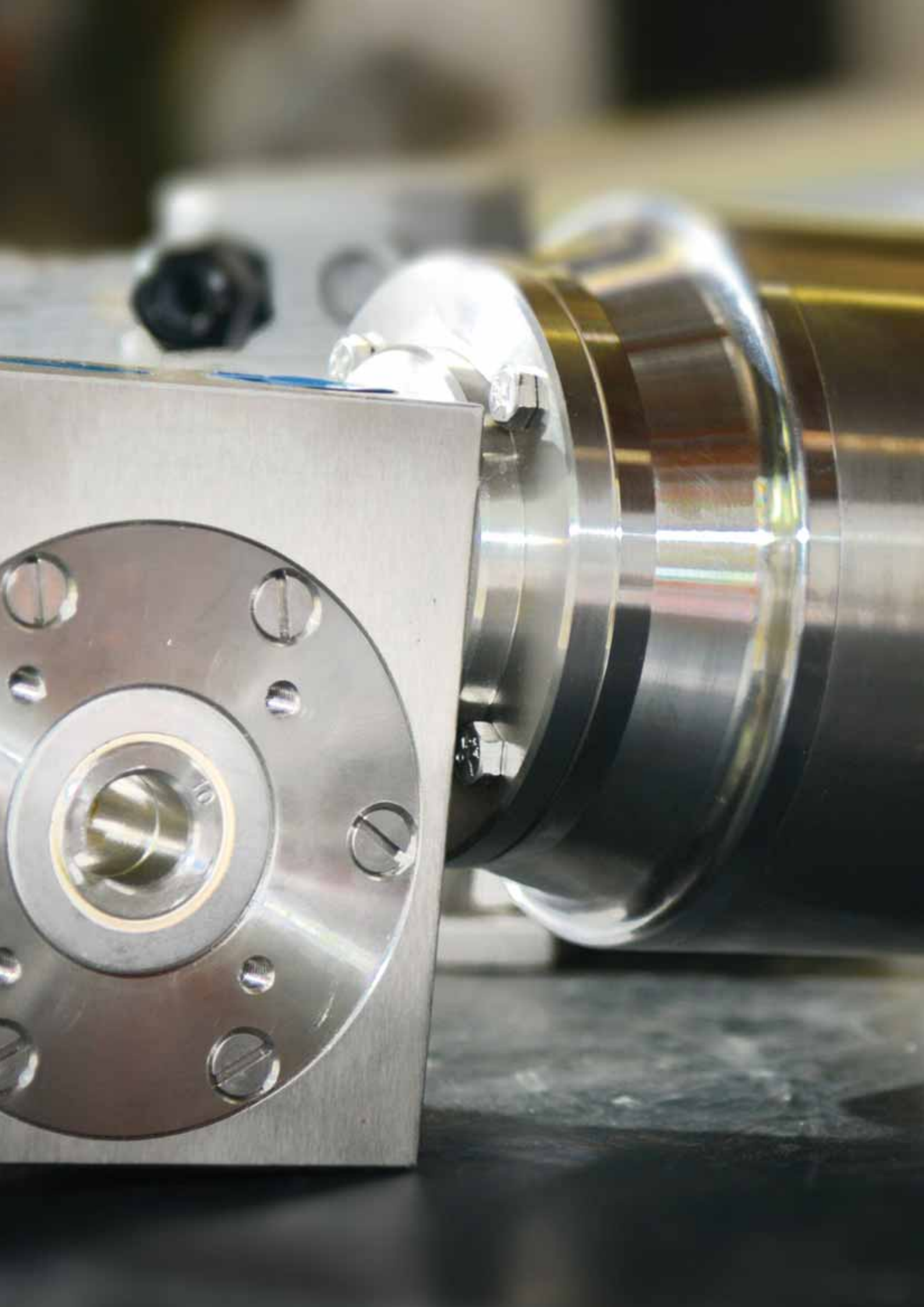
Hygienic Levelling  
Feet & Castors  
- see pages 35 - 38



Stainless Steel  
Hygienic Bearing Unit  
with stand off spacers  
- see pages 17 & 18







# HYGIENIC WASHDOWN GEARDRIVES

Stainless Steel Gearboxes	7
---------------------------	---

Hygienic Aluminium Gearboxes	7
------------------------------	---

Stainless Steel Electric Motors	8
---------------------------------	---

Hygienic Aluminium Electric Motors	8
------------------------------------	---





It all began with a hydrodynamic speed variator invented by Giuseppe Speggorin in 1955.

In 1983 Giuseppe's son, Stefano Speggorin, founded his own company, Hydro-Mec Spa, now one prominent manufacturer of high quality modular gearboxes.

In 2006 Stefano decided to face another challenge, this time coming directly from the end users. He designed a range of stainless steel modular gearboxes with a focus on the food industry and started manufacturing same year at Hydro-Mec. As time passed, it became obvious that this product range deserved its own story.

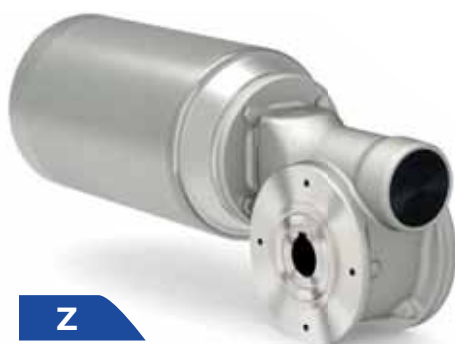
In 2016 Cleangeartech brand and business unit started. Today it is a division using high end technology to manufacture and supply an evolving worldwide sales network with a strong focus on R&D activities. Cleangeartech is deeply committed to providing a high level of service supplying an exceptional product demanding industries like Food & Beverage, Meat & Poultry, Marine, Chemical and Pharmaceutical.

## HYGIENIC DESIGN ALUMINIUM WORM GEARBOXES

This product is:



**CLEAN-GEARTECH**



**Z**

Type Tipo	Torque Coppia	Center distance Interasse	Input power Potenza in entrata	Hollow output shaft Albero cavo in uscita
Z30	21 Nm	30 mm	0.09 ÷ 0.18 kW	ø14 mm
Z45	41 Nm	45 mm	0.09 ÷ 0.37 kW	ø18 mm
Z50	72 Nm	50 mm	0.12 ÷ 0.75 kW	ø25 mm*
Z63	147 Nm	63 mm	0.37 ÷ 1.8 kW	ø25 mm
Z85	347 Nm	85 mm	0.55 ÷ 4.0 kW	ø35 mm

\* Alternative shaft option of 20mm

## STAINLESS STEEL WORM GEARBOXES

This product is:



**I**

Type Tipo	Torque Coppia	Center distance Interasse	Input power Potenza in entrata	Hollow output shaft Albero cavo in uscita
I30	21 Nm	30 mm	0.09 ÷ 0.18 kW	Standard: ø14 mm, Optional: ø19 mm
I45	41 Nm	45 mm	0.12 ÷ 0.37 kW	Standard: ø18 mm, Optional: ø24 mm
I50	72 Nm	50 mm	0.12 ÷ 0.75 kW	Standard: ø25 mm, Optional: ø28 mm
I63	147 Nm	63 mm	0.37 ÷ 1.8 kW	Standard: ø25 mm, Optional: ø28 mm
I85	347 Nm	85 mm	0.55 ÷ 4.0 kW	Standard: ø35 mm, Optional: ø42 mm
I11	651 Nm	110 mm	1.1 ÷ 4.0 kW	Standard: ø42 mm, Optional: ø42 mm







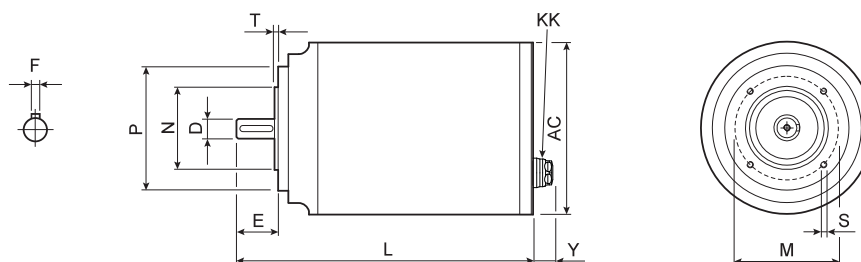
**IEC B14**  
Standard in stock

**HYGIENE ALUMINIUM AND STAINLESS STEEL PREMIUM ELECTRIC MOTORS**

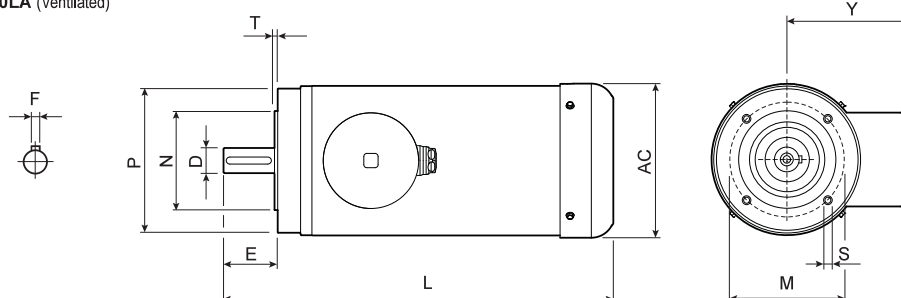
**IEC B5**  
only on request

**B14** Dimensions  
Dimensioni

63A+90L (Totally enclosed, not ventilated)



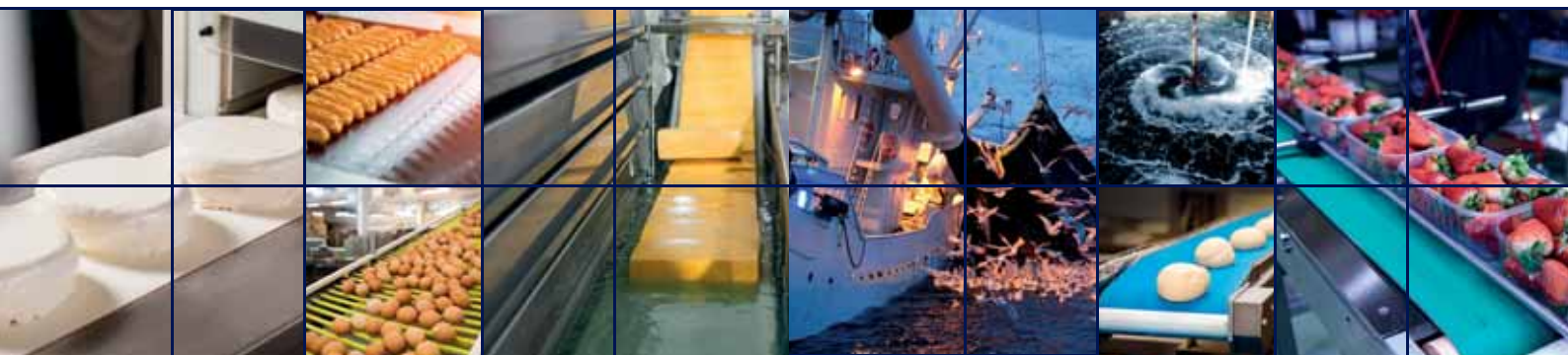
100LA (Ventilated)

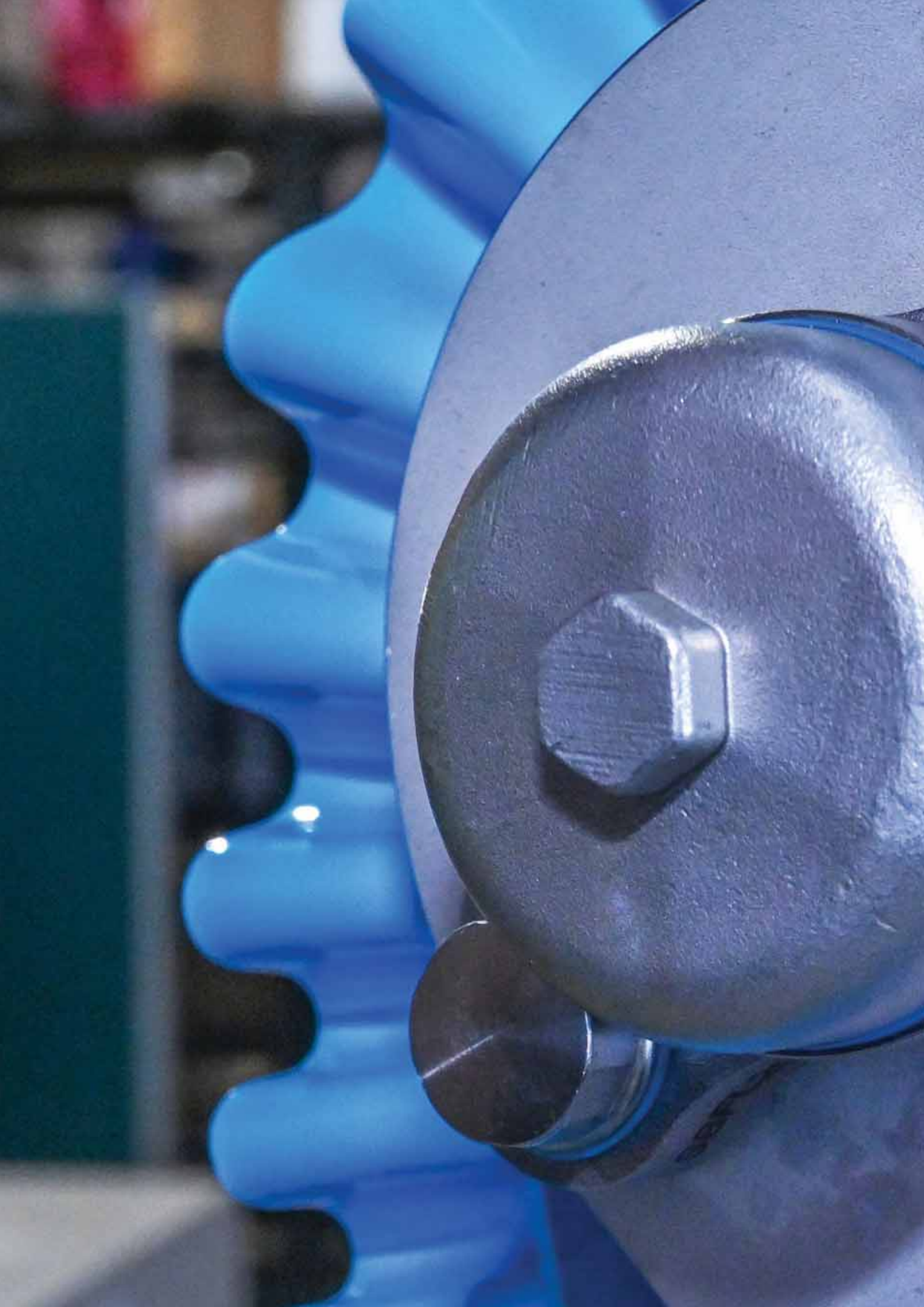


4 poles B14

Motor	kW	IE3	rpm (min <sup>-1</sup> )	Nm	A (400V)	COS (φ)	D	F	E	L	AC	Y	N	M	P	T	S	Kg	KK
63A	0.12		1440	0.80	0.44	0.57	11 j6 M4	4	23	229	131	24	60 j6	75	90	2.5	4xM5	8.7	M16x1.5 ø7.5-10 Tightening: 15 Nm
63B	0.18			1.19	0.58	0.62				244								10.0	
71A	0.25		1440	1.66	0.72	0.64	14 j6 M5	5	30	266	131	27	70 j6	85	105	2.5	4xM6	11.6	M20x1.5 ø11-13.5
71B	0.37			2.45	1.10					286								13.5	
80A	0.55		1460	3.60	1.50	0.67	19 j6 M6	6	40	280	166	30	80 j6	100	120	3	4xM6	19.0	Tightening: 18 Nm
80B	0.75			4.91	2.10					305								22.0	
90S	1.1		1460	7.20	2.90	0.70	24 j6 M8	8	50	345	166	30	95 j6	115	140	3	4xM8	27.0	M25x1.5 ø15-18 Tightening: 35 Nm
90L	1.5			9.81	4.00					390								33.0	
100LA	2.2		1440	14.6	4.80	0.79	28 j6 M10	8	60	432.5	171	140	110 j6	130	160	3.5	4xM8	34.0	M20x1.5 ø11-13.5 Tightening: 18 Nm

Ventilated







# STAINLESS STEEL HYGIENIC BEARING SYSTEM

Stainless Steel F 4 Bolt Flanged Units	13
--	----

Stainless Steel FL 2 Bolt Flanged Units	14
---	----

Stainless Steel FB 3 Bolt Flanged Units	15
---	----

Stainless Steel Stand-Off Spacers	17
-----------------------------------	----





## HYGIENIC LINE BALL BEARING UNITS

A complete range of stainless steel bearing units for the very challenging food and beverage industry. Strict cleaning regimes are necessary to eliminate contaminants and reduce the spread of bacteria. Regularly cleaning of the machinery means that the machines are frequently exposed to pressure washdowns with caustic, antibacterial cleaning agents. EQM Hygiene line ball bearing units offer a range of bearing solutions for such demanding environments. Standard made in stainless steel 316 ( Wstnr. 1.44 ) O-rings and Hygienic seals. These bearing units are developed for demanding environments. EQM Hygiene line ball bearing units are designed to withstand frequent washdowns. Moreover the new bearing units solve many of the problems connected to traditional maintenance.

EQM Hygiene line Stainless steel ball bearing units have been developed for use in these demanding environments. The stainless steel hygienic surface design is developed to proactively eliminate contaminant traps and reduce the spread of bacteria. The blue optical and detectable hygienic seals and stainless steel housing are made to EHEDGE guidelines.

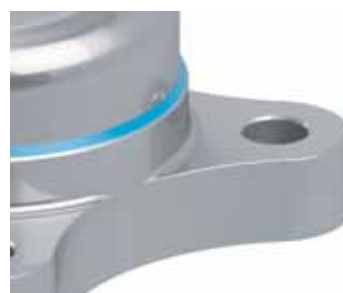
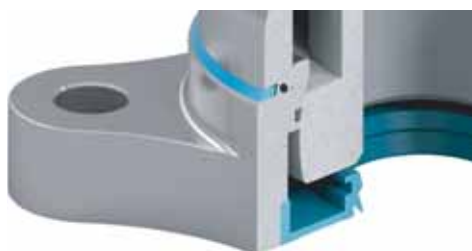
The EQM Hygiene line stainless steel bearing units are completely sealed units with open or closed endcover and backseal.



## HYGIENIC LINE STAINLESS STEEL BEARING UNITS PROPERTIES

The bearing housing is designed to avoid crevices or recesses where soiling and bacteria might accumulate or become trapped. The housing has no sharp corners all surfaces are angled to prevent pooling. The flat surfaces on the housings are intended to use for installation the housings with EQM Hygiene line hygienic bolts and bonded seals. The smooth surface on the housing plays an important role to achieve easy cleanability and drainability.

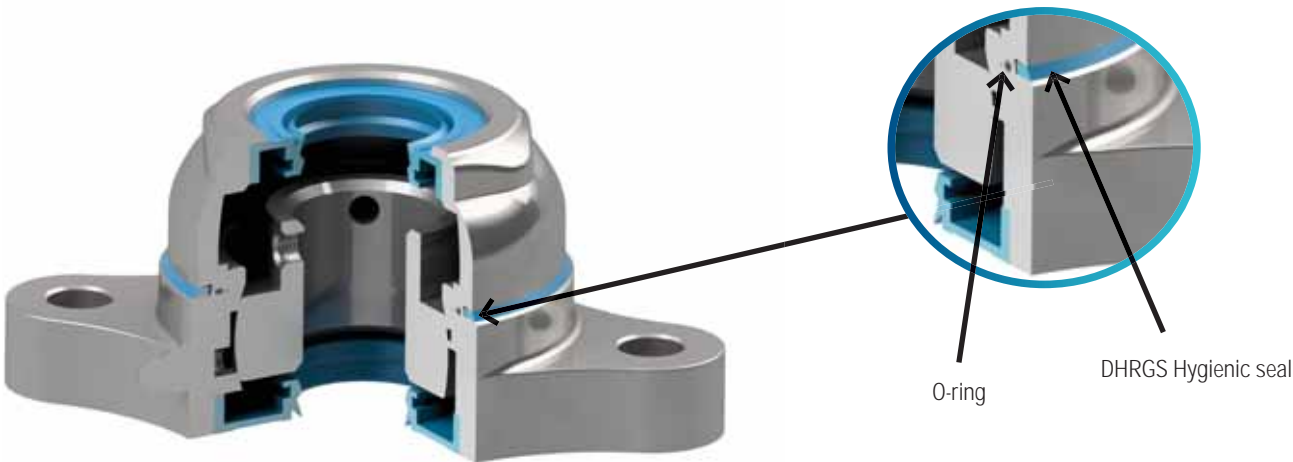
The endcover is provided with an O-ring and a Hygienic seal offering maximum hygienic protection. The back seal offers an additional sealing protection to protect the bearing unit from shaft side contamination. All units are lubricated with NSF-approved foodgrade grease, the high-quality grease is registered by NSF as a category H1 grease.







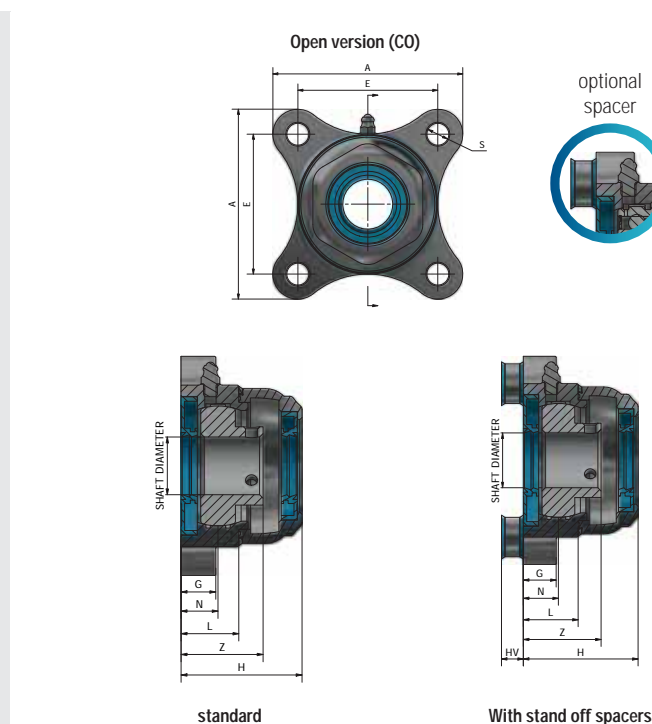
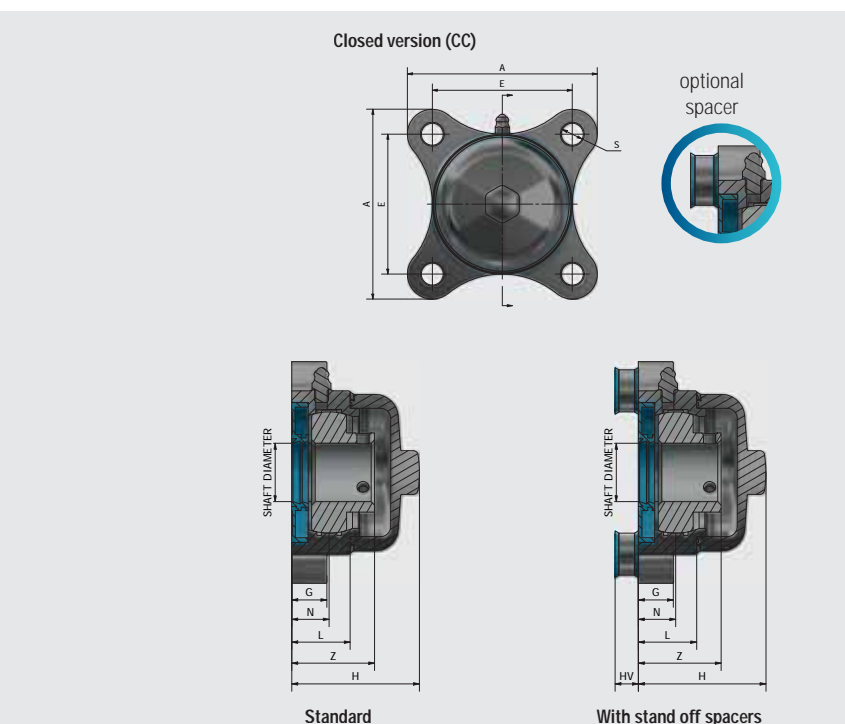
HYGIENIC LINE DESIGNS



**Alignment**  
When mounting EQM Hygiene line fully sealed ball bearing units it is important for the performance and longevity of the bearing that any misalignment is limited to +/- 1 degree.



## DH LASS SB F 4 HOLE SS FLANGED UNITS



TYPE	SHAFT Ø	A	E	G	H	HV	L	N	S	Z
DH LASS SB F CC 204	20	88	64	15	54,2	10	24	15	12	33
DH LASS SB F CO 204					51,9					
DH LASS SB F CC 205	25	95	70	15	54,7	10	25	16	12	35,5
DH LASS SB F CO 205					52,4					
DH LASS SB F CC 206	30	108	83	15	61	10	29	18	12	40
DH LASS SB F CO 206					58,7					
DH LASS SB F CC 207	35	117	92	17	64,7	10	31	19	14	42,5
DH LASS SB F CO 207					62,4					
DH LASS SB F CC 208	40	130	102	17	70	10	32	21	16	46
DH LASS SB F CO 208					70,7					
DH LASS SB F CC 209	45	135	105	18	71,5	10	33	22	16	53,7
DH LASS SB F CO 209					69,2					
DH LASS SB F CC 210	50	143	111	20	71	10	38	25	16	55
DH LASS SB F CO 210					72,7					

\*All sizes in mm

For spacers see page 17



Stainless Steel SB insert, with grub screw

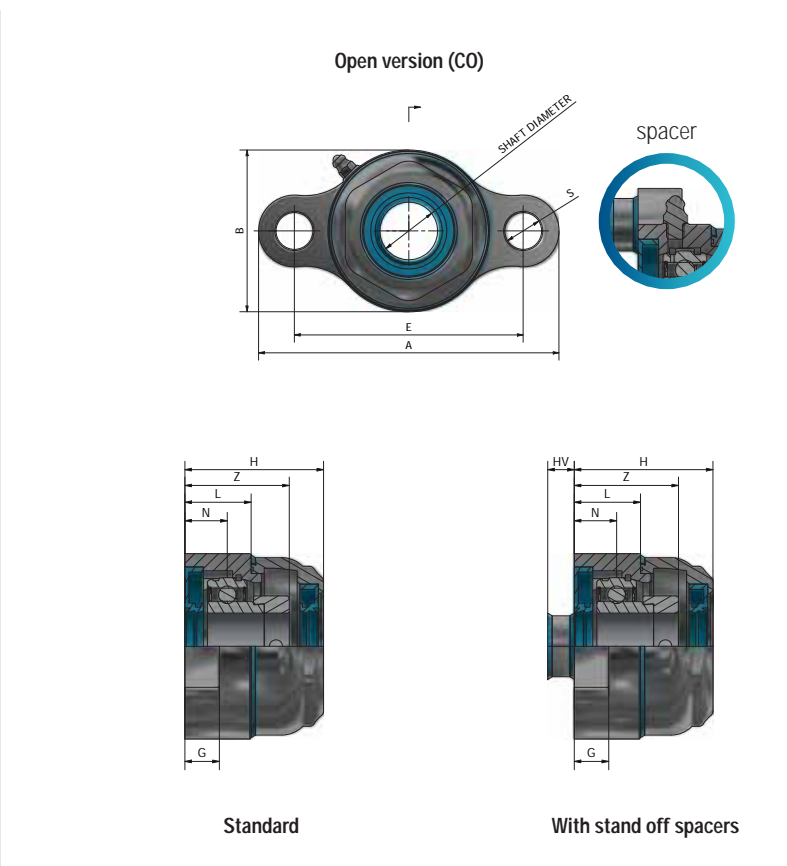
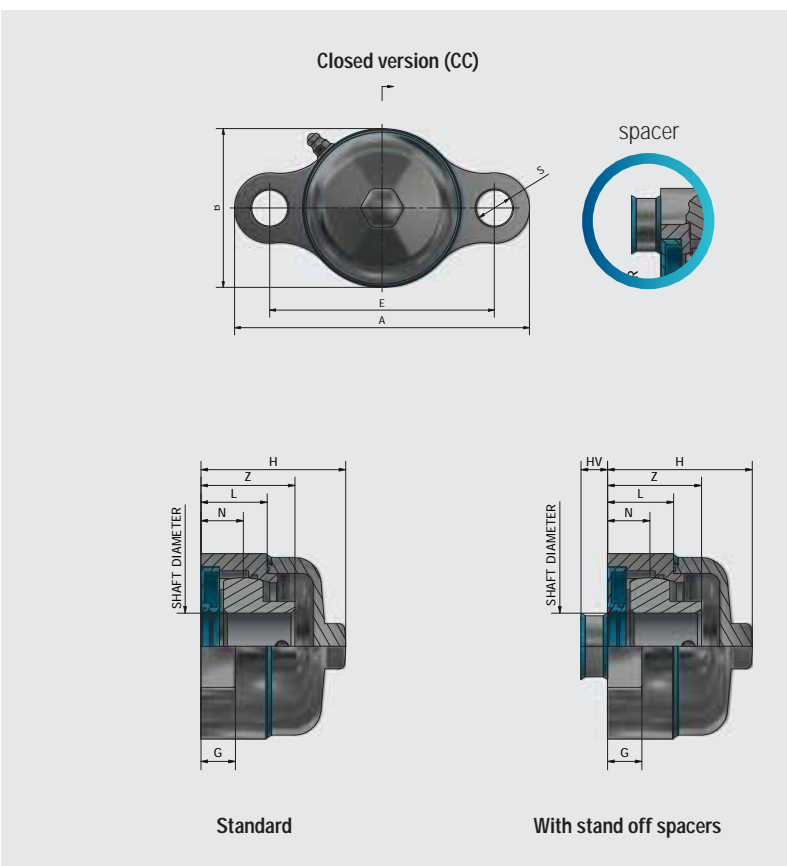


Stainless Steel SA insert, with eccentric ring

Available on request



## DH LASS SB FL 2 HOLE SS FLANGED UNITS



TYPE	SHAFT Ø	A	B	E	G	H	HV	L	N	S	Z
DH LASS SB FL CC 204	20	115	65	90	11	54,2	10	24	15	12	33
DH LASS SB FL CO 204						51,9					
DH LASS SB FL CC 205	25	130	70	99	13	54,7	10	25	16	16	35,5
DH LASS SB FL CO 205						52,4					
DH LASS SB FL CC 206	30	148	80	117	13	61	10	29	18	16	40
DH LASS SB FL CO 206						58,7					
DH LASS SB FL CC 207	35	161	90	130	15	64,7	10	31	19	16	42,5
DH LASS SB FL CO 207						62,4					
DH LASS SB FL CC 208	40	175	100	144	15	70	10	33	21	16	46
DH LASS SB FL CO 208						70,7					
DH LASS SB FL CC 209	45	188	110	148	16	71,5	10	33	22	19	53,7
DH LASS SB FL CO 209						69,2					
DH LASS SB FL CC 210	50	197	120	157	16	71	10	38	22	19	55
DH LASS SB FL CO 210						72,7					

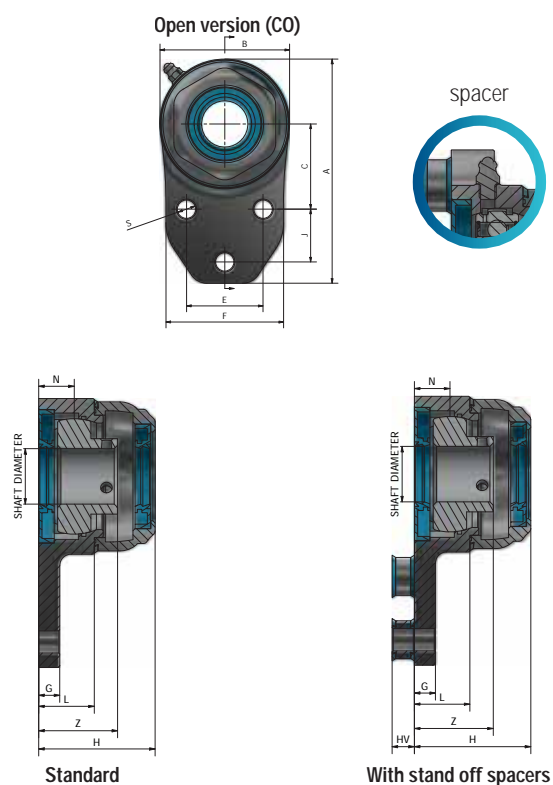
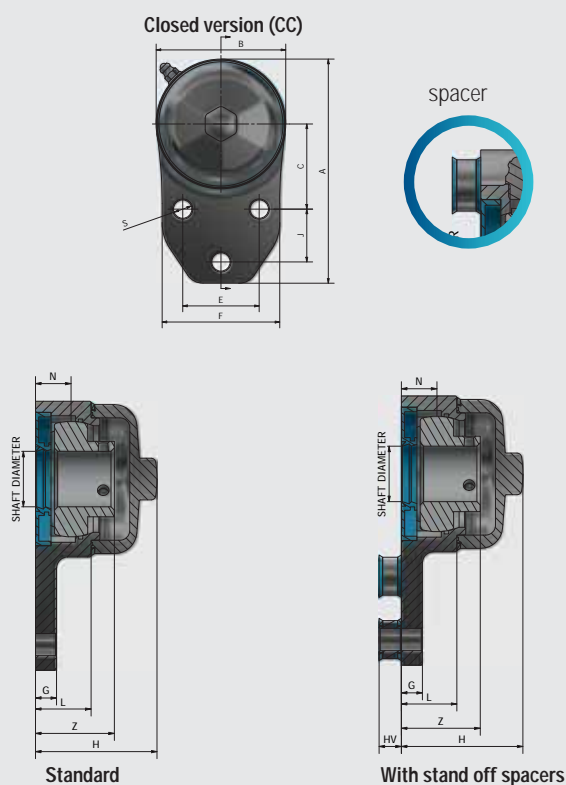
\*All sizes in mm

For spacers see page 17





## DH LASS SB FB 3 HOLE SS FLANGED UNITS



TYPE	SHAFT Ø	A	B	C	E	F	G	H	HV	J	L	N	S	Z
DH LASS SB FB CC 204	20	108	65	43,3	38,1	60,3	8	54,2	10	22	24	15	10	33
DH LASS SB FB CO 204								51,9						
DH LASS SB FB CC 205	25	121	70	46	41,3	63,5	9,5	54,7	10	28,5	25	16	10	35,5
DH LASS SB FB CO 205								52,9						
DH LASS SB FB CC 206	30	137	80	52,4	47,6	70	9,5	61	10	31,7	29	18	10	40
DH LASS SB FB CO 206								58,7						
DH LASS SB FB CC 207	35	156	90	60,3	50,8	83	12,7	64,7	10	31,7	31	19	13	42,5
DH LASS SB FB CO 207								62,4						
DH LASS SB FB CC 208	40	164	100	60,3	50	78	15,9	70	10	41,3	33	21	12	46
DH LASS SB FB CO 208								70,7						
DH LASS SB FB CC 209	45	176	110	65	54	80	18,3	71,5	10	42,9	33	22	12	53,7
DH LASS SB FB CO 209								69,2						
DH LASS SB FB CC 210	50	190	120	74,6	70	102	12,7	71	10	41,3	38	22	13	55
DH LASS SB FB CO 210								72,5						

\*All sizes in mm

For spacers see page 17







## DH LASS BEARING LOAD BEARINGS

**DH LASS SA F EQM HYGIENE 4 HOLE SS FLANGED UNITS**

type of load	204	205	206	207	208	209	210
	15950	13000	18000	18500	19100	19350	19650
	10250	12150	17700	18500	19250	19350	19620
	3650	3350	3350	3520	3790	3850	3990

**DH LASS SA FL EQM HYGIENE 2 HOLE SS FLANGED UNITS**

type of load	204	205	206	207	208	209	210
	11750	11375	16450	16900	17350	17600	17950
	11000	13850	13350	13950	14050	14300	14550
	8500	1100	14200	14900	15150	15350	15650

**DH LASS SA FB EQM HYGIENE 3 HOLE SS FLANGED UNITS**

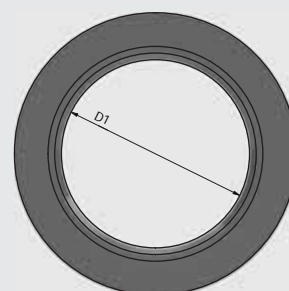
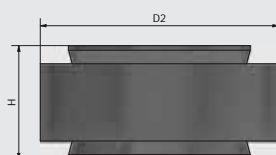
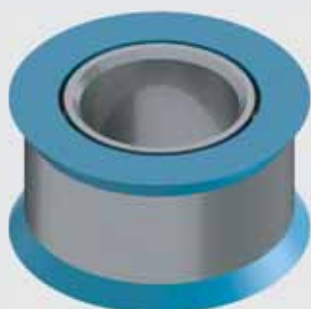
type of load	204	205	206	207	208	209	210
	-	-	-	7200	9100	12200	12900
	-	-	-	9200	11100	11800	11900
	-	-	-	2600	2800	2900	3100



loads in N



## DH LASS BUS SPACERS

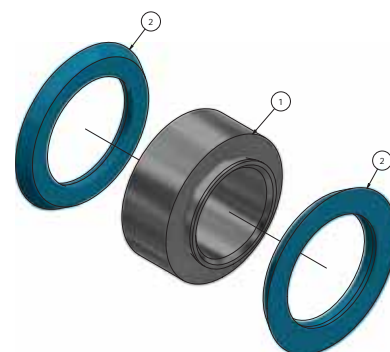


Bearing type	Spacer type	QTY	Hygienic ring	D1	D2	H
DHLASS F 204	DHLASS BUS 11 18 10	4	DHRGS 16	11	18	10
DHLASS F 205	DHLASS BUS 11 18 10		DHRGS 16	11	18	10
DHLASS F 206	DHLASS BUS 11 18 10		DHRGS 16	11	18	10
DHLASS F 207	DHLASS BUS 11 18 10		DHRGS 16	11	18	10
DHLASS F 208	DHLASS BUS 14 21 10		DHRGS 19	14	21	10
DHLASS F 209	DHLASS BUS 16 23 10		DHRGS 21	16	23	10
DHLASS F 210	DHLASS BUS 16 23 10		DHRGS 21	16	23	10



Hygienic seal  
\*2 seals per spacer

DHLASS FL 204	DHLASS BUS 13 20 10	2	DHRGS 18	13	20	10
DHLASS FL 205	DHLASS BUS 16 23 10		DHRGS 21	16	23	10
DHLASS FL 206	DHLASS BUS 16 23 10		DHRGS 21	16	23	10
DHLASS FL 207	DHLASS BUS 16 23 10		DHRGS 21	16	23	10
DHLASS FL 208	DHLASS BUS 16 23 10		DHRGS 21	16	23	10
DHLASS FL 209	DHLASS BUS 19 26 10		DHRGS 24	19	26	10
DHLASS FL 210	DHLASS BUS 19 26 10		DHRGS 24	19	26	10



DHLASS FB 204	DHLASS BUS 10 17 10	3	DHRGS 15	10	17	10
DHLASS FB 205	DHLASS BUS 10 17 10		DHRGS 15	10	17	10
DHLASS FB 206	DHLASS BUS 10 17 10		DHRGS 15	10	17	10
DHLASS FB 207	DHLASS BUS 13 20 10		DHRGS 18	13	20	10
DHLASS FB 208	DHLASS BUS 13 20 10		DHRGS 18	13	20	10
DHLASS FB 209	DHLASS BUS 13 20 10		DHRGS 18	13	20	10
DHLASS FB 210	DHLASS BUS 13 20 10		DHRGS 18	13	20	10

Number	Part
1	Spacer
2	DHRGS Ring



## INSTALLATION GUIDE

Bearing size	DH LASS F	DH LASS FL	DH LASS FB
	G		
204	15	11	8
205	15	13	9,5
206	15	13	9,5
207	17	15	12,7
208	17	15	15,9
209	18	16	18,3
210	20	16	12,7

Bearing size	DH LASS F	DH LASS FL	DH LASS FB
	B / N		
204	M10	M10	M8
205	M10	M14	M8
206	M10	M14	M8
207	M10	M14	M12
208	M12	M14	M10
209	M14	M18	M10
210	M14	M18	M12

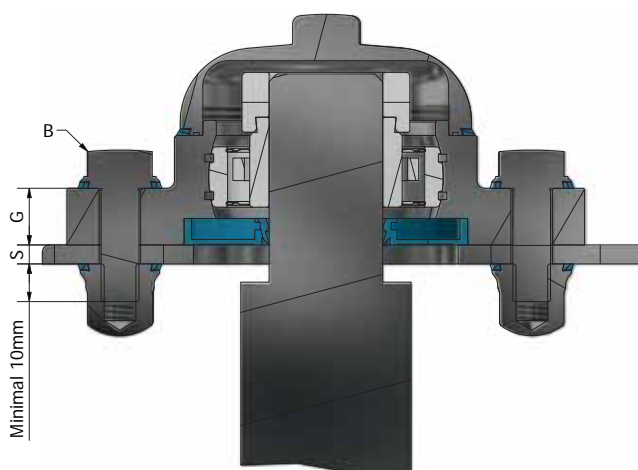
Bearing size	DH LASS F	DH LASS FL	DH LASS FB
	L		
204	10	10	10
205	10	10	10
206	10	10	10
207	10	10	10
208	10	10	10
209	10	10	10
210	10	10	10

For bolts and nuts see .....

For spacers see page 10

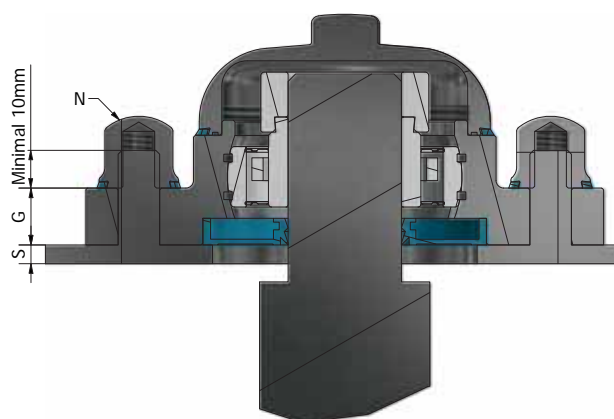
### Bolt + nut configuration

Bolt length = 10 + S + G



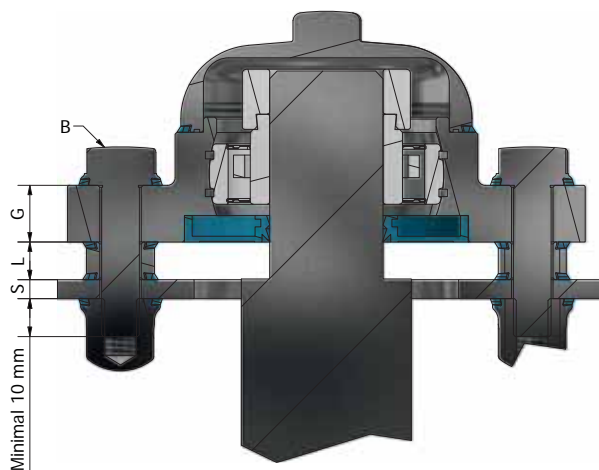
### Threaded rod + nut configuration

Rod length = 10 + G



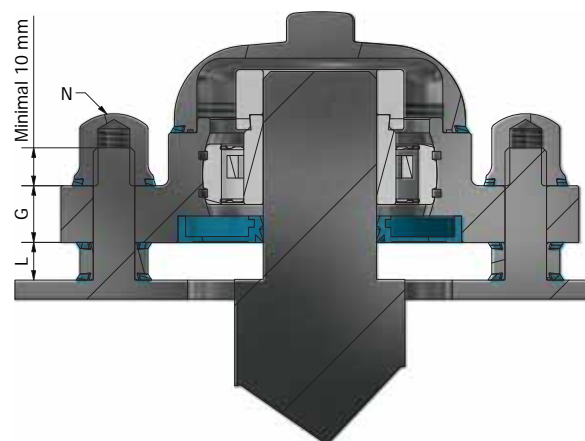
### Bolt + spacer + nut configuration

Bolt length = 10 + S + L + G



### Threaded rod + spacer + nut configuration

Rod length = 10 + G + L



All sizes in mm

WASHINGTON  
GLENIE  
316L  
1P59K

... M  
... DES...  
... 25...



# STAINLESS STEEL HYGIENIC ELECTRICAL COMPONENTS

Stainless Steel Cable Glands

21

Stainless Steel Electrical Enclosures

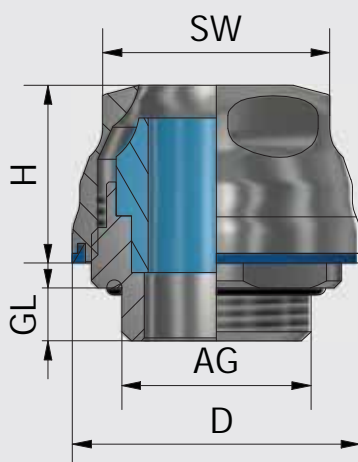
22





## STAINLESS STEEL CABLE GLANDS

### HGSS - SERIE



The Stainless 316 hygienic cable glands offer a hygienic and IP69 connection from your cable into the cabinet or terminal box. Standard these glands offer EMC shield connection. The wide selection of possible cable diameter offers a solution for almost every cable.



Part Name	Cable diameter	D	AG	H	GL
HGSSM12	5 - 6.5	21	M12 x 1.5	19	6
HGSSM16	7.5 - 10	27	M16 x 1.5	20	6
HGSSM16	6 - 7.5	27	M16 x 1.5	20	6
HGSSM16	11 - 13.5	33	M16 x 1.5	20	6
HGSSM20	9-12	33	M20 x 1.5	22.5	6
HGSSM25	15 - 18	38	M25 x 1.5	23.5	7
HGSSM25	14 - 16	38	M25 x 1.5	23.5	7
HGSSM32	21 - 25	45	M32 x 1.5	26.5	8
HGSSM32	18 - 21	45	M32 x 1.5	26.5	8

• All sizes in mm





## STAINLESS STEEL HYGIENIC ELECTRICAL ENCLOSURES

IP69K hygienic food grade electrical enclosures are designed to prevent contamination and are suitable for the food and beverage, pharmaceutical and other industries that require high hygienic standards.

**Protection:** Complies with IP66, IK07, IP69K

**Standard:** DGUV EN 1672-2, EN62208, EN/AS60529, ISO20653, UL508A EHEDG, RoHS Compliant



**Material:**

- Body: 1.5mm Grade 304 Stainless Steel
- Door: 1.5mm Grade 304 Stainless Steel
- Device Mounting Plate: Galvanised Steel Sheet
- Seal: Blue Silicone FDA compliant

**Body:** The robust monoblock body with 30° sloping roof is fabricated using 1.5mm Grade 304 Stainless Steel. It is designed to be completely smooth and without crevices and without concave angles to facilitate cleaning and avoid deposits. The body is designed to promote self draining for ease of hygienic cleaning.

**Door:** The door is fabricated using 1.5mm Grade 304 Stainless Steel and includes specially cast internal hinges to allow for removal of the seals. The door is designed for a 115° opening with hinges on the right hand side.

**Seal:** Blue silicone seal, FDA compliant for food production areas.

**Lock:** IP69K Stainless Steel Hygiene lock with seal. Dirt resistant and easy to clean.

**Device Mounting Plate:** Fabricated using galvanised steel sheet. Supplied fitted.



**Ask about our large range  
of hygienic enclosures**





# STAINLESS STEEL HYGIENIC HARDWARE

Stainless Steel Nuts & Bolts	25
------------------------------	----

Stainless Steel U-Handles	27
---------------------------	----

Stainless Steel Star Knobs	28
----------------------------	----

Stainless Steel Three Lobe Knobs	29
----------------------------------	----

Stainless Steel Four Lobe Knobs	30
---------------------------------	----

Stainless Steel Waist Shaped Knobs	31
------------------------------------	----

Stainless Steel Nut & Ring	32
----------------------------	----





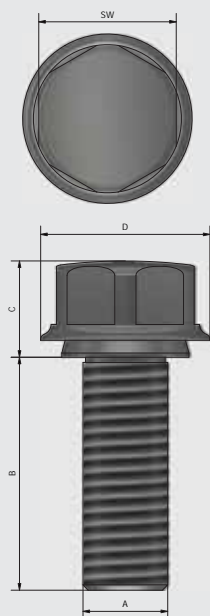
## STAINLESS STEEL NUTS & BOLTS



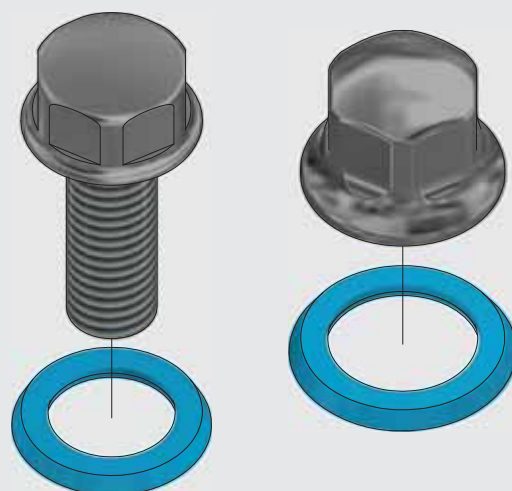
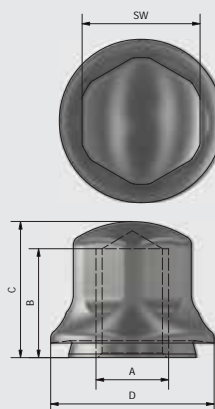
EQM Hygiene hardware is designed in stainless steel and combines high surface quality and sealed bolting areas. The sealed mounting surface enables fastening without dead spaces and ensures reliable contact pressure after installation.

EQM Hygiene nuts and bolts are produced in stainless steel (SS316), the hygienic seals are in blue foodgrade silicon and included in the delivery.

DH100-M Series



DH100-F Series





## DH100-M Series

Part name	A	B	C	D	SW
DH100 M8x12-9,1-16-M	M8	12	9,1	16	13
DH100 M8x16-9,1-16-M	M8	16	9,1	16	13
DH100 M8x20-9,1-16-M	M8	20	9,1	16	13
DH100 M8x22-9,1-16-M	M8	22	9,1	16	13
DH100 M8x25-9,1-16-M	M8	25	9,1	16	13
DH100 M8x30-9,1-16-M	M8	30	9,1	16	13
DH100 M8x35-9,1-16-M	M8	35	9,1	16	13

Part name	A	B	C	D	SW
DH100 M12x20-11,1-23-M	M12	20	11,1	23	19
DH100 M12x25-11,1-23-M	M12	25	11,1	23	19
DH100 M12x30-11,1-23-M	M12	30	11,1	23	19
DH100 M12x35-11,1-23-M	M12	35	11,1	23	19
DH100 M12x40-11,1-23-M	M12	40	11,1	23	19
DH100 M12x45-11,1-23-M	M12	45	11,1	23	19

Part name	A	B	C	D	SW
DH100 M16x20-13,1-28-M	M16	20	13,1	28	24
DH100 M16x25-13,1-28-M	M16	25	13,1	28	24
DH100 M16x30-13,1-28-M	M16	30	13,1	28	24
DH100 M16x35-13,1-28-M	M16	35	13,1	28	24
DH100 M16x40-13,1-28-M	M16	40	13,1	28	24
DH100 M16x45-13,1-28-M	M16	45	13,1	28	24

Part name	A	B	C	D	SW
DH100 M10x16-10,1-21-M	M10	16	10,1	21	17
DH100 M10x20-10,1-21-M	M10	20	10,1	21	17
DH100 M10x25-10,1-21-M	M10	25	10,1	21	17
DH100 M10x30-10,1-21-M	M10	30	10,1	21	17
DH100 M10x35-10,1-21-M	M10	35	10,1	21	17
DH100 M10x40-10,1-21-M	M10	40	10,1	21	17
DH100 M10x45-10,1-21-M	M10	45	10,1	21	17

Part name	A	B	C	D	SW
DH100 M14x25-12,1-25-M	M14	25	12,1	25	22
DH100 M14x30-12,1-25-M	M14	30	12,1	25	22
DH100 M14x35-12,1-25-M	M14	35	12,1	25	22
DH100 M14x40-12,1-25-M	M14	40	12,1	25	22
DH100 M14x45-12,1-25-M	M14	45	12,1	25	22

Part name	A	B	C	D	SW
DH100 M18x25-16,1-31-M	M18	25	16,1	31	27
DH100 M18x30-16,1-31-M	M18	30	16,1	31	27
DH100 M18x35-16,1-31-M	M18	35	16,1	31	27
DH100 M18x40-16,1-31-M	M18	40	16,1	31	27
DH100 M18x50-16,1-31-M	M18	50	16,1	31	27

## DH100-F Series

Part name	A	B	C	D	SW
DH100 M8-12-15-18-F	M8	12	15	18	13
DH100 M10-12-17-21-F	M10	12	17	21	17
DH100 M12-15-19-23-F	M12	15	19	23	19
DH100 M14-18-22-26-F	M14	18	22	26	22
DH100 M16-19-25-28-F	M16	19	25	28	24
DH100 M18-25-30-32-F	M18	25	30	32	27

• All sizes in mm



STAINLESS STEEL U-HANDLES

DH200 Series



DH200 Stainless steel cabinet U-handles are intended for use in hygiene areas.

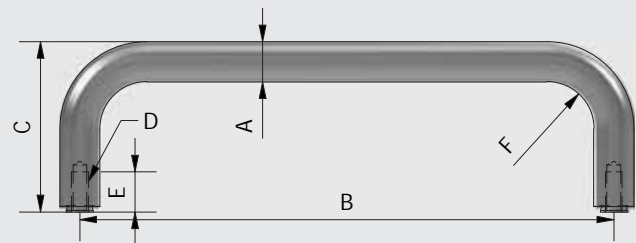
The sealed mounting surface enables fastening without dead spaces.

The high quality finish prevents adherence of dirt and facilitates cleaning.

Part Name	A	B	C	D	E	F
DH200 12-125-51-M5-F	12	125	51	M5	12	14
DH200 12-160-51-M5-F	12	160	51	M5	12	14
DH200 16-160-59-M6-F	16	160	59	M6	12	18
DH200 16-200-59-M6-F	16	200	59	M6	12	18

• All sizes in mm

DH200 Series

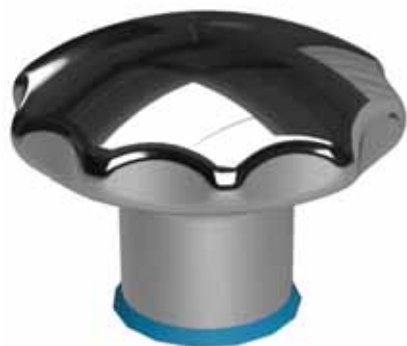






STAINLESS STEEL STAR KNOBS

DH300 Series



DH300 Stainless steel star knobs are intended for use in hygienic areas.

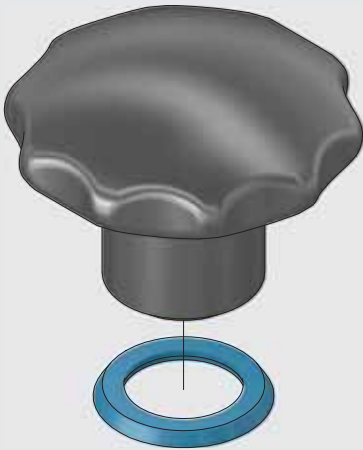
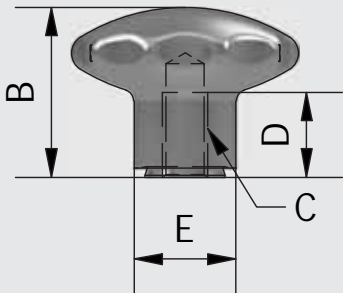
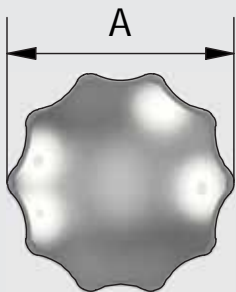
The sealed mounting surface enables fastening without dead spaces.

The high quality finish and the large corner radius prevent adherence of dirt and facilitate cleaning.

Part Name	A	B	C	D	E
DH300 40-30-M6-F	40	30	M6	12	18
DH300 40-30-M8-F	40	30	M8	15	18
DH300 50-34-M8-F	50	34	M8	15	21
DH300 50-34-M10-F	50	34	M10	18	21

• All sizes in mm

DH300 Series





## STAINLESS STEEL THREE LOBE KNOBS

### DH301 Series

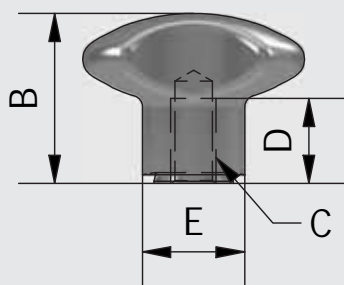
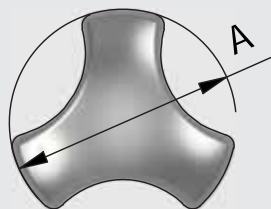


DH 301 Stainless Steel Three lobe knobs are intended for use in hygiene areas. The sealed mounting surface enables fastening without dead spaces. The high quality finish as well as the large corner radius and closed surfaces prevent adherence of dirt and facilitate cleaning.

Part Name	A	B	C	D	E
DH301 40-30-M6-F	40	30	M6	12	18
DH301 40-30-M8-F	40	30	M8	15	18
DH301 50-34-M8-F	50	34	M8	15	21
DH301 50-34-M10-F	50	34	M10	18	21

• All sizes in mm

### DH301 Series





STAINLESS STEEL FOUR LOBE KNOBS

DH302 Series

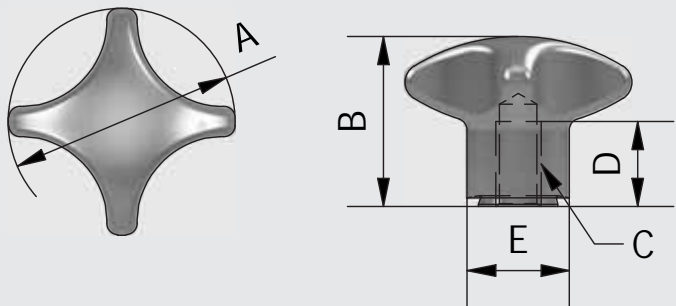


DH 302 Stainless Steel Four lobe knobs are intended for use in hygiene areas. The sealed mounting surface enables fastening without dead spaces. The high quality finish as well as the large corner radius and closed surfaces prevent adherence of dirt and facilitate cleaning.

Part Name	A	B	C	D	E
DH302 40-30-M6-F	40	30	M6	12	18
DH302 40-30-M8-F	40	30	M8	15	18
DH302 50-34-M8-F	50	34	M8	15	21
DH302 50-34-M10-F	50	34	M10	18	21

• All sizes in mm

DH302 Series





## STAINLESS STEEL WAIST SHAPED KNOBS

### DH303 Series



DH303 waist shaped Stainless Steel Knobs are intended for use in hygienic areas. The sealed mounting surfaces enables mounting without dead spaces; the impervious geometry in combination with the high quality finish prevents the accumulation of dirt and facilitates cleaning.

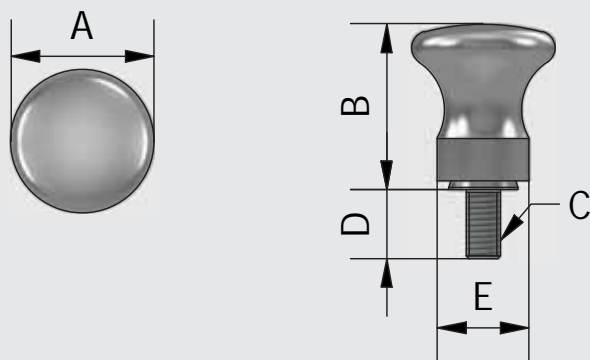
Part Name	A	B	C	D	E
DH303 20-24-M5x10-M	20	24	M5	10	14
DH303 25-29-M6x12-M	25	29	M6	12	16
DH303 32-37-M8x14-M	32	37	M8	14	18

• All sizes in mm

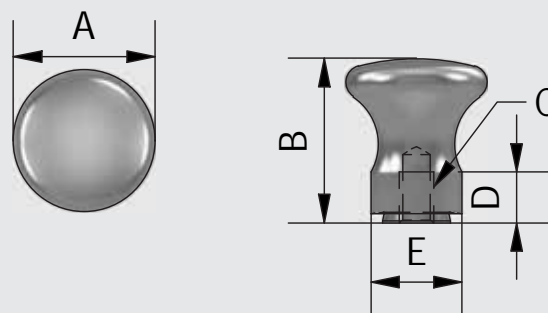
Part Name	A	B	C	D	E
DH303 20-24-M5-F	20	24	M5	7	14
DH303 25-29-M6-F	25	29	M6	9	16
DH303 32-37-M8-F	32	37	M8	12	18

### DH303 Series

DH303-M



DH303-F







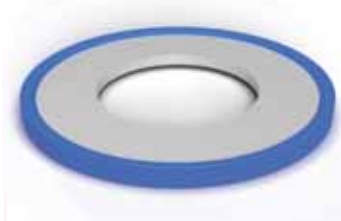
STAINLESS STEEL NUT & RING

DHN Series



Part Name	A	B	C	SW
DHN M4	M4	7	12	8
DHN M5	M5	8	12	8
DHN M6	M6	9	14	10
DHN M8	M8	12	18	13
DHN M10	M10	15	20	17

DHRS Series

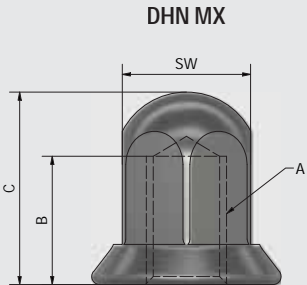


Dertec hygienic nuts and bonded seals combine freedom from dead spaces and sealed bolting areas.

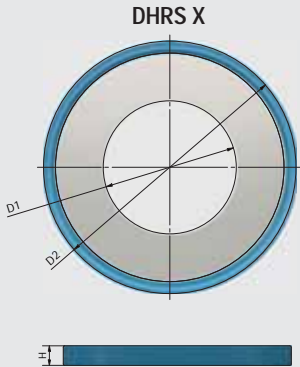
The stainless steel 316 Nuts and Silicon bonded seals offer an easy to clean and antibacterial solution.

Part Name	D1	D2	H
DHRS M4	4,2	10,7	1,8
DHRS M5	5,2	10,7	1,8
DHRS M6	6,2	13,1	1,8
DHRS M8	8,2	16,9	1,8
DHRS M10	10,2	20,9	1,8

DHN Series



DHRS Series





# STAINLESS STEEL HYGIENIC LEVELLING FEET & CASTORS

Hygienic Levelling Feet	35
-------------------------	----

Hygienic Certified Levelling Feet	36
-----------------------------------	----

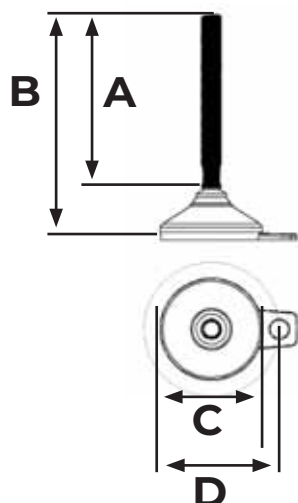
Hygienic Levelling Castors	37
----------------------------	----

Hygienic Certified Castors	38
----------------------------	----





## HYGIENIC LEVELLING FEET

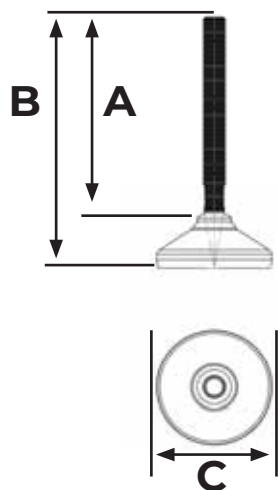


HX FIXING

HX FIXING Fully Threaded Levelling Foot FDA Approved, Anti-Slip Rubber.					Max Static Load
	A	B	C	D	(N)
M16 M20 *	70	109	65	46.9	32,000/49,000
	97	136	80	53.2	32,000/49,000
	139	178	105	70	29,000/49,000
	172	211	125	80	20,000/48,000

\* In Stock

All sizes in mm

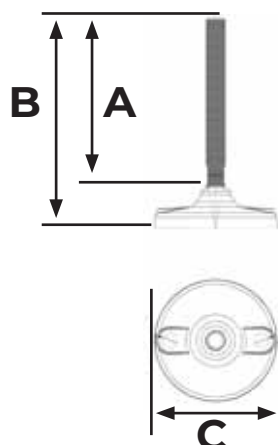


HX

HX Fully Threaded Levelling Foot FDA Approved, Anti-Slip Rubber.				Max Static Load
	A	B	C	(N)
M12 M16 *	70	109	65	32,000/49,000
	97	136	80	32,000/49,000
	139	178	105	29,000/49,000
	172	211	125	20,000/48,000
	223	262	150	12,500/30,000

\* In Stock

All sizes in mm



HPA AS FIXING

HPA AS FIXING Fully Threaded Plastic Levelling Foot. Anti-Slip Pad.				Max Static Load
	A	B	C	(N)
M16	140	171	80	29,000
M20	140	174	100	49,000

\* In Stock

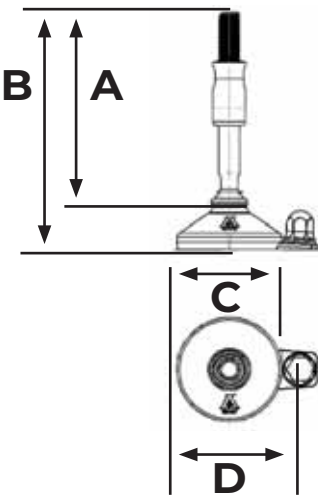
All sizes in mm

Large range of sizes available on request.





CERTIFIED HYGIENIC LEVELLING FEET

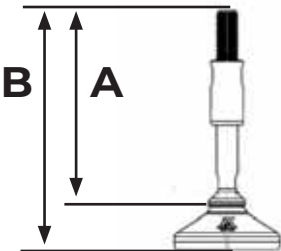


XH FIXING

3A, USDA, EHEDG	XH FIXING Certified Hygienic Levelling Foot. FDA Approved, Anti-Slip Rubber.				Max Static Load
M16	A	B	C	D	(N)
	150	178	65	46.8	30,800
	150	183	80	53.2	
	150	183	105	70	
	150	184	125	80	

\* In Stock

All sizes in mm

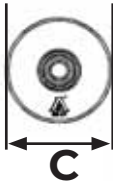


XH

3A, USDA, EHEDG	XH Certified Hygienic Levelling Foot. FDA Approved, Anti-Slip Rubber.			Max Static Load
M16	A	B	C	(N)
	150	178	65	30,800
	150	183	80	
	150	183	105	
	150	184	125	

All sizes in mm

More thread and length sizes available upon request



Also available



**Type XHG + XHU** - All movable parts are 100% hygienically sealed even if the load on the foot is removed. All sealings are blue and therefore detectable by scanning systems.

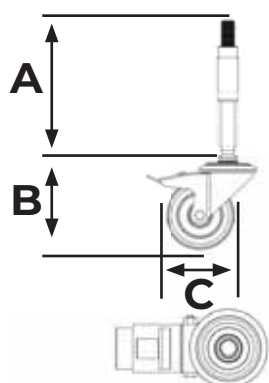
Minimum cleaning effort is obtained by the design of the self draining surfaces. Additionally, the foot is hygienically sealed to the floor by vulcanised FDA approved, anti-vibration, anti-slip runner, which blocks out bacteria underneath the footplate.

**Type XHFVG + XHFVJ** - The XHFVG and XHFVJ offer supreme height adjustability up to +/- 100mm as standard and has a sealed low-friction thread (lubricated for life).

Flexible mounting with optional flanges or thread adaptor, no risk of over adjusting the sleeve and thereby exposing the thread.



## HYGIENIC LEVELLING CASTORS

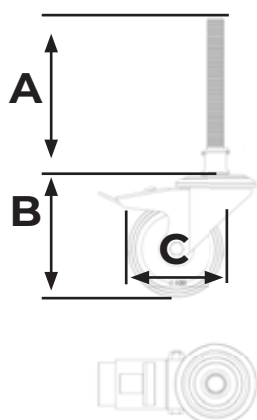


SCR-B-XH

SCR-B-XH Hygienic Levelling Castors. Brake on swivel and wheel.				Max Dynamic Load
M20	A	B	C Ø	(N)
	150	108	80	1,500
	* 210	128	100	

\* In Stock

All sizes in mm



SCR-B-HX

SCR-B-HX Hygienic Levelling Castors. Horizontal and vertical brake.				Max Dynamic Load
M20	A	B	C Ø	(N)
	67	108	80	1,500
	* 96	128	100	
	162	155	125	

\* In Stock

All sizes in mm

Large range of sizes available on request.

Also available



SCSB



SCRB



CS

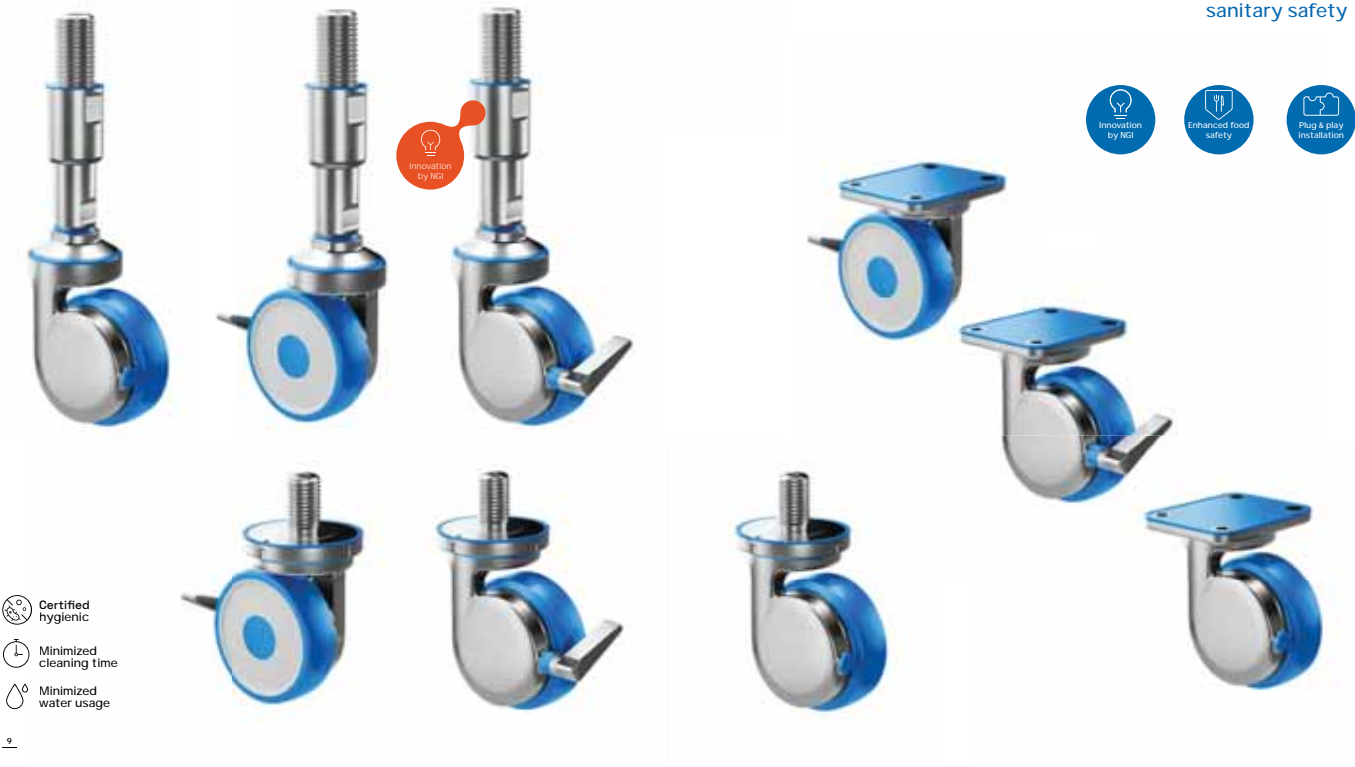


CERTIFIED HYGIENIC CASTORS

HYGIENIC OPTIMISED  
CASTORS

The only patented Castors in the world  
hygienically designed in accordance to EHEDG,  
3-A and USDA standards with easy  
access for cleaning from all angles

For use in sanitary production environments.  
self-draining surfaces, sealed movable parts and no exposed  
thread secures absolute minimum cleaning and maximum  
sanitary safety



Full NGI Catalogue  
with links to live  
demonstrations  
available upon request





# STAINLESS STEEL AIR CIRCULATORS

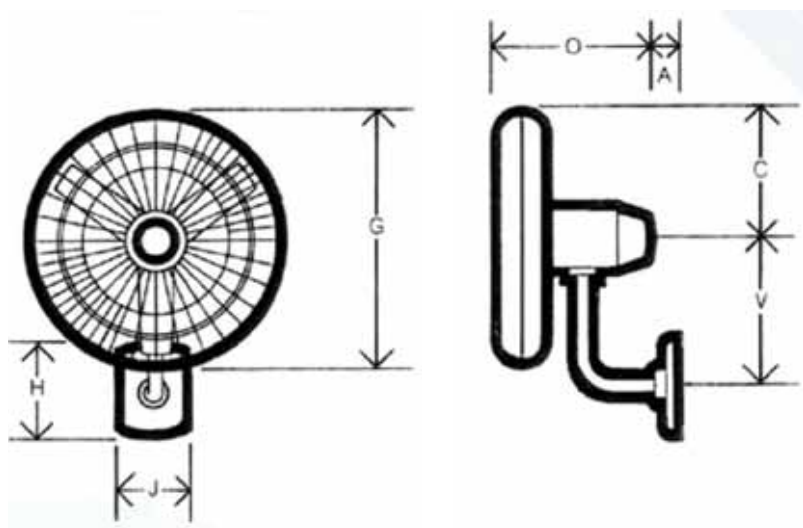
Stainless Steel Wall Fans

41





## STAINLESS STEEL WALL FANS



- 1 & 3 phase versions
- IP56 & IP66 rating
- 2 speed motors (240V models only)
- Fixed head design – tilt & height adjustable
- GRP adjustable pitch blades
- Washdown duty / hoseproof rating

Wall Mounted (mm)	A (mm)	C (mm)	G (mm)	H (mm)	J (mm)	O (mm)	V (max) (mm)	Weight (kg)
460	80	265	525	220	205	440	320	21
630	80	345	690	220	205	440	320	23
810	80	435	870	220	205	440	320	25

## Performance Data

Unit	Fan Diameter (mm)	Motor Speed (r/s)	Motor Power (kW)	*Noise dBA at 3m	Free Air Volume (L/s)
Wall Mounted	460	24	0.25	58	3000
Wall Mounted	630	24	0.25	60	6500
Wall Mounted	810	16	0.3	60	17000





## OPTIMISING **FOOD** SAFETY

*"The quality is fantastic, the price, it wasn't cheap but I knew what I was paying for."*

Conveyor Manufacturer

*"Thank you for sourcing that motor. It is installed and working well. Your knowledge of motors and codes has meant a speedy solution has been found when others weren't able to decipher our requirements as quickly."*

Apple Packhouse Manager

*"When we've got a curly one, we ring and ask what would you do here and he generally has a solution off the top of his head."*

Vegetable Packhouse Engineer

*"I'd definitely recommend them because they have helped me out in some sticky situations."*

Engineering Company Director



**EQMHYGIENE**

Optimising food safety

518 Omahu Road  
Hastings 4120  
New Zealand

**Freephone:** 0800 147 847

**Phone:** +64 6 878 8475

**Email:** sales@eqm.co.nz

**[www.eqm.co.nz](http://www.eqm.co.nz)**