



EQMHYGIENE

Optimising food safety



Stainless steel
Hygienic Parts





EQM HYGIENE Stainless Steel Hygienic Parts

Product safety and consumer protection are becoming increasingly important in today's food industry.

EQM Hygiene standard parts can assist the production process in these sensitive areas and facilitate the manufacture of products with a long shelf life, which are free from preservatives.

EQM Hygiene parts combine high surface quality, freedom from dead spaces, non-scooped outer surfaces, and sealed bolting areas.

A sealed design ensures reliable contact pressure after installation.

Hygienic Design also means that the time and material needed for regular cleaning is significantly reduced, this results in less and shorter cleaning work.

EQM Hygiene contributes to the sustainability of the plant

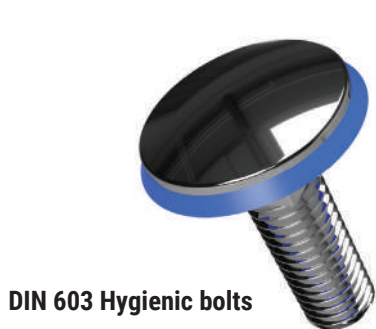
- Lower energy consumption
- Less fresh water consumption,
- Less cleaning agent required
- Less production of waste water
- Lower costs and saving of resources
- Lower operating costs

EQM Hygiene parts are designed in stainless steel for use in food processing plants and offer a high corrosion resistance.

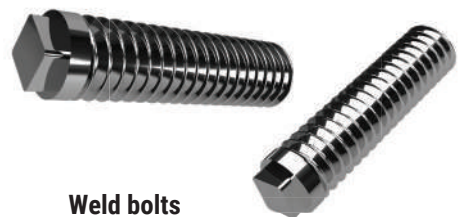
The EQM Hygiene parts are intended to be used in hygienic areas. The sealed mounting surface enables fastening without dead spaces.

The large corner radii and closed surfaces prevent adherence of dirt and facilitate cleaning.

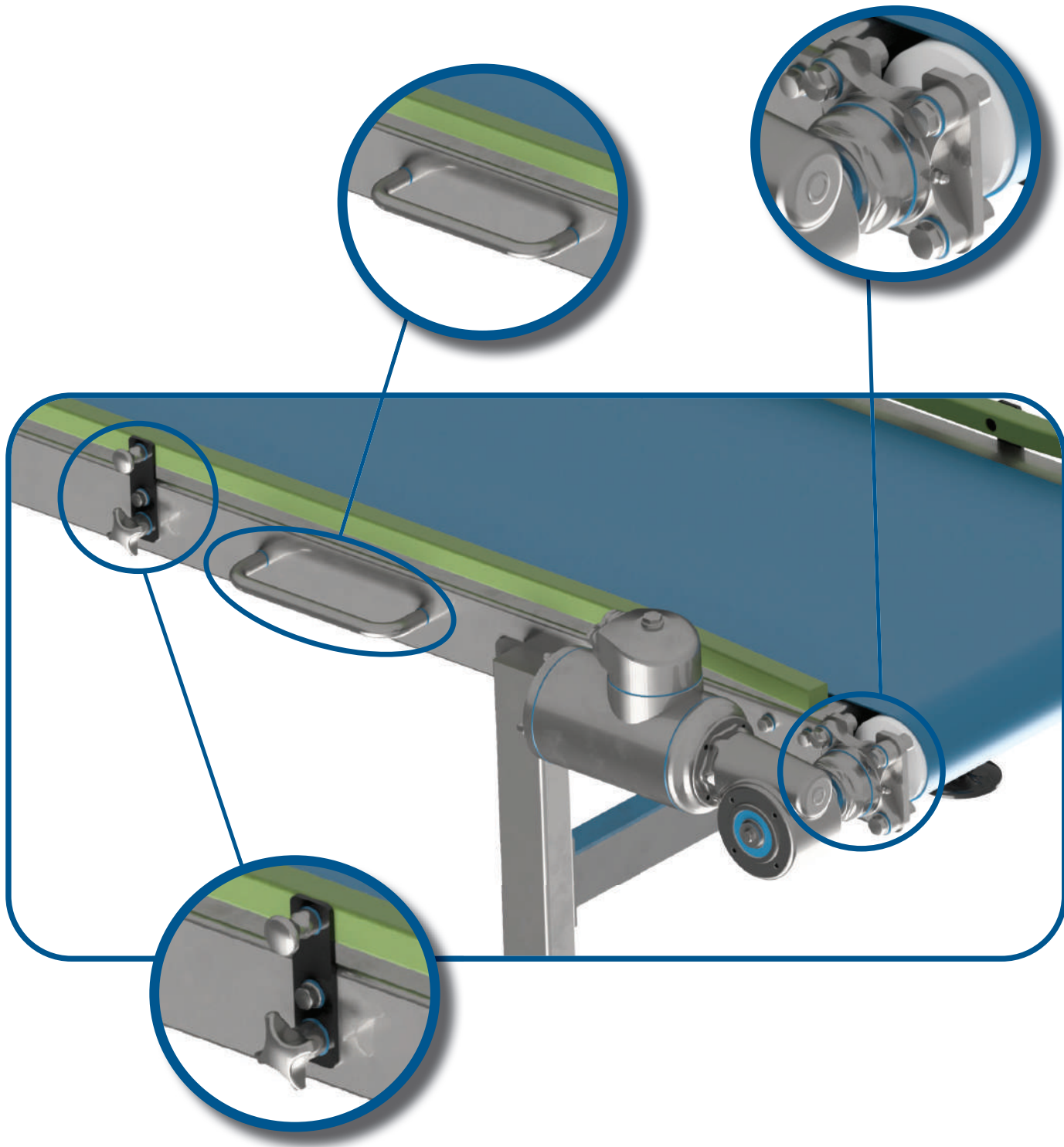
UNDER DEVELOPMENT



DIN 603 Hygienic bolts



Weld bolts





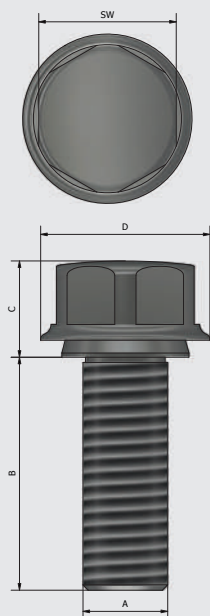
EQM HYGIENE Stainless Steel Nuts & Bolts



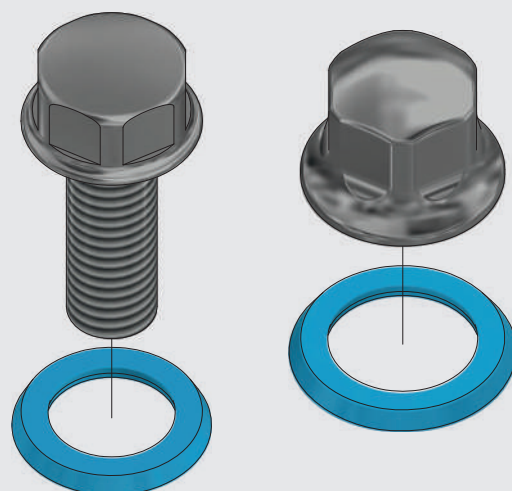
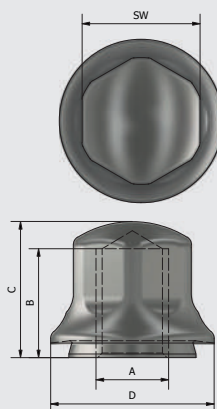
EQM Hygiene parts are designed in stainless steel and combine high surface quality and sealed bolting areas. The sealed mounting surface enables fastening without dead spaces and ensures reliable contact pressure after installation.

EQM Hygiene nuts and bolts are produced in stainless steel (SS316), the hygienic seals are in blue foodgrade silicon and included in the delivery.

DH100-M Series



DH100-F Series





DH100-M Series

Part name	A	B	C	D	SW
DH100 M8x12-9,1-16-M	M8	12	9,1	16	13
DH100 M8x16-9,1-16-M	M8	16	9,1	16	13
DH100 M8x20-9,1-16-M	M8	20	9,1	16	13
DH100 M8x22-9,1-16-M	M8	22	9,1	16	13
DH100 M8x25-9,1-16-M	M8	25	9,1	16	13
DH100 M8x30-9,1-16-M	M8	30	9,1	16	13
DH100 M8x35-9,1-16-M	M8	35	9,1	16	13

Part name	A	B	C	D	SW
DH100 M12x20-11,1-23-M	M12	20	11,1	23	19
DH100 M12x25-11,1-23-M	M12	25	11,1	23	19
DH100 M12x30-11,1-23-M	M12	30	11,1	23	19
DH100 M12x35-11,1-23-M	M12	35	11,1	23	19
DH100 M12x40-11,1-23-M	M12	40	11,1	23	19
DH100 M12x45-11,1-23-M	M12	45	11,1	23	19

Part name	A	B	C	D	SW
DH100 M16x20-13,1-28-M	M16	20	13,1	28	24
DH100 M16x25-13,1-28-M	M16	25	13,1	28	24
DH100 M16x30-13,1-28-M	M16	30	13,1	28	24
DH100 M16x35-13,1-28-M	M16	35	13,1	28	24
DH100 M16x40-13,1-28-M	M16	40	13,1	28	24
DH100 M16x45-13,1-28-M	M16	45	13,1	28	24

Part name	A	B	C	D	SW
DH100 M10x16-10,1-21-M	M10	16	10,1	21	17
DH100 M10x20-10,1-21-M	M10	20	10,1	21	17
DH100 M10x25-10,1-21-M	M10	25	10,1	21	17
DH100 M10x30-10,1-21-M	M10	30	10,1	21	17
DH100 M10x35-10,1-21-M	M10	35	10,1	21	17
DH100 M10x40-10,1-21-M	M10	40	10,1	21	17
DH100 M10x45-10,1-21-M	M10	45	10,1	21	17

Part name	A	B	C	D	SW
DH100 M14x25-12,1-25-M	M14	25	12,1	25	22
DH100 M14x30-12,1-25-M	M14	30	12,1	25	22
DH100 M14x35-12,1-25-M	M14	35	12,1	25	22
DH100 M14x40-12,1-25-M	M14	40	12,1	25	22
DH100 M14x45-12,1-25-M	M14	45	12,1	25	22

Part name	A	B	C	D	SW
DH100 M18x25-16,1-31-M	M18	25	16,1	31	27
DH100 M18x30-16,1-31-M	M18	30	16,1	31	27
DH100 M18x35-16,1-31-M	M18	35	16,1	31	27
DH100 M18x40-16,1-31-M	M18	40	16,1	31	27
DH100 M18x50-16,1-31-M	M18	50	16,1	31	27

DH100-F Series

Part name	A	B	C	D	SW
DH100 M8-12-15-18-F	M8	12	15	18	13
DH100 M10-12-17-21-F	M10	12	17	21	17
DH100 M12-15-19-23-F	M12	15	19	23	19
DH100 M14-18-22-26-F	M14	18	22	26	22
DH100 M16-19-25-28-F	M16	19	25	28	24
DH100 M18-25-30-32-F	M18	25	30	32	27

• All sizes in mm



EQM HYGIENE Stainless Steel U-Handles

DH200 Series



DH200 Stainless steel cabinet U-handles are intended for use in hygiene areas.

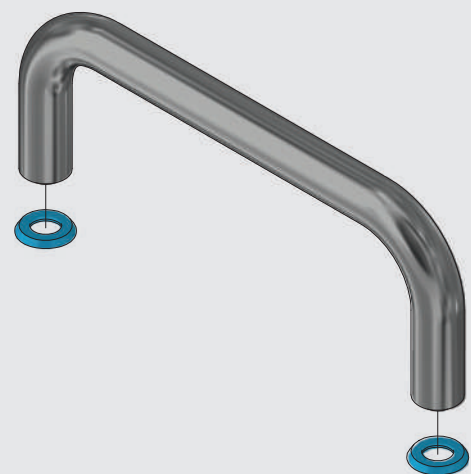
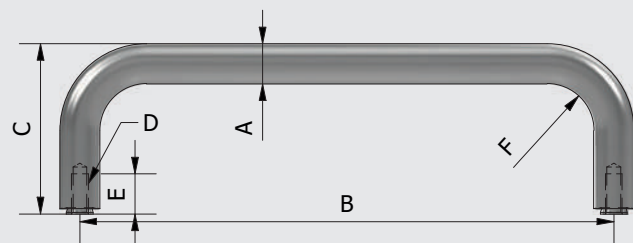
The sealed mounting surface enables fastening without dead spaces.

The high quality finish prevents adherence of dirt and facilitates cleaning.

Part Name	A	B	C	D	E	F
DH200 12-125-51-M5-F	12	125	51	M5	12	14
DH200 12-160-51-M5-F	12	160	51	M5	12	14
DH200 16-160-59-M6-F	16	160	59	M6	12	18
DH200 16-200-59-M6-F	16	200	59	M6	12	18

• All sizes in **mm**

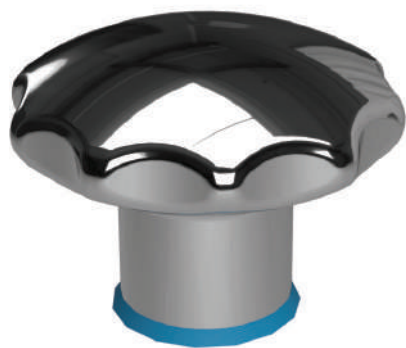
DH200 Series





EQM HYGIENE Stainless Steel Starknobs

DH300 Series



DH300 Stainless steel star knobs are intended for use in hygienic areas.

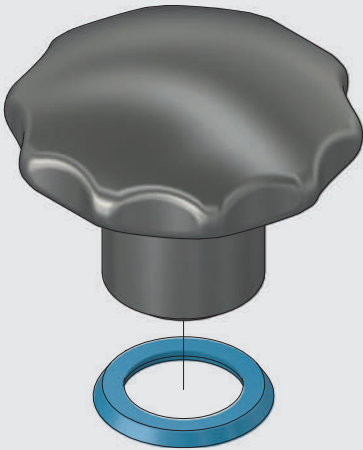
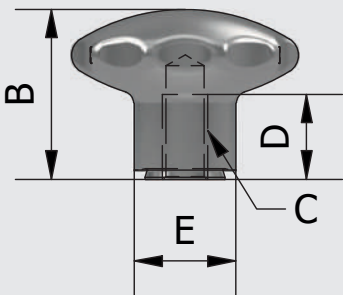
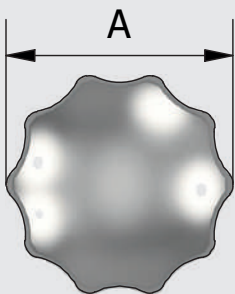
The sealed mounting surface enables fastening without dead spaces.

The high quality finish and the large corner radius prevent adherence of dirt and facilitate cleaning.

Part Name	A	B	C	D	E
DH300 40-30-M6-F	40	30	M6	12	18
DH300 40-30-M8-F	40	30	M8	15	18
DH300 50-34-M8-F	50	34	M8	15	21
DH300 50-34-M10-F	50	34	M10	18	21

• All sizes in mm

DH300 Series





EQM HYGIENE Stainless Steel Three Lobe Knobs

DH301 Series

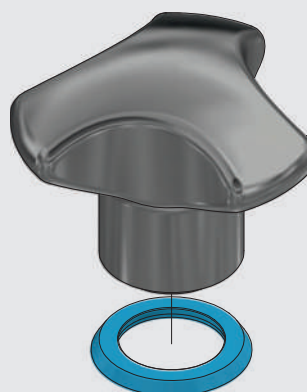
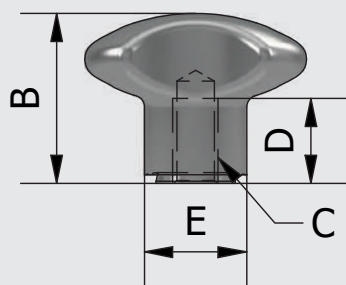
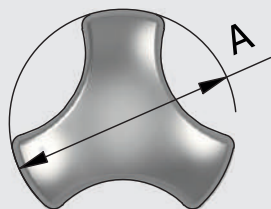


DH 301 Stainless Steel Three lobe knobs are intended for use in hygiene areas. The sealed mounting surface enables fastening without dead spaces. The high quality finish as well as the large corner radius and closed surfaces prevent adherence of dirt and facilitate cleaning.

Part Name	A	B	C	D	E
DH301 40-30-M6-F	40	30	M6	12	18
DH301 40-30-M8-F	40	30	M8	15	18
DH301 50-34-M8-F	50	34	M8	15	21
DH301 50-34-M10-F	50	34	M10	18	21

• All sizes in **mm**

DH301 Series





EQM HYGIENE Stainless Steel Four Lobe Knobs

DH302 Series

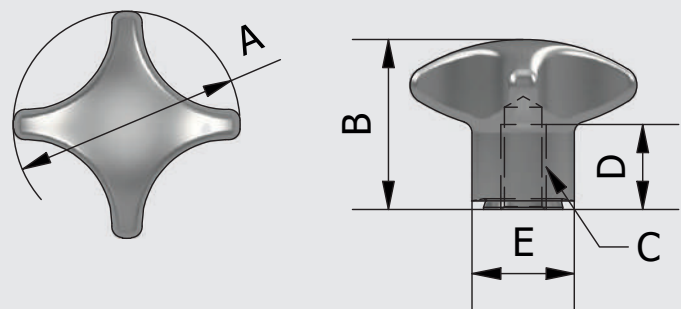


DH 302 Stainless Steel Four lobe knobs are intended for use in hygiene areas. The sealed mounting surface enables fastening without dead spaces. The high quality finish as well as the large corner radius and closed surfaces prevent adherence of dirt and facilitate cleaning.

Part Name	A	B	C	D	E
DH302 40-30-M6-F	40	30	M6	12	18
DH302 40-30-M8-F	40	30	M8	15	18
DH302 50-34-M8-F	50	34	M8	15	21
DH302 50-34-M10-F	50	34	M10	18	21

• All sizes in mm

DH302 Series





EQM HYGIENE Stainless Steel Waist Shaped Knobs

DH303 Series



DH303 waist shaped Stainless Steel Knobs are intended for use in hygienic areas. The sealed mounting surfaces enables mounting without dead spaces; the impervious geometry in combination with the high quality finish prevents the accumulation of dirt and facilitates cleaning.

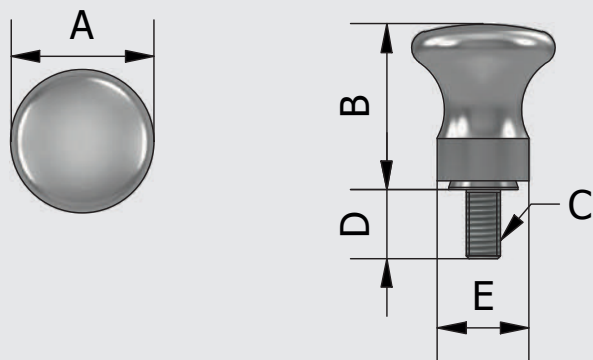
Part Name	A	B	C	D	E
DH303 20-24-M5x10-M	20	24	M5	10	14
DH303 25-29-M6x12-M	25	29	M6	12	16
DH303 32-37-M8x14-M	32	37	M8	14	18

• All sizes in mm

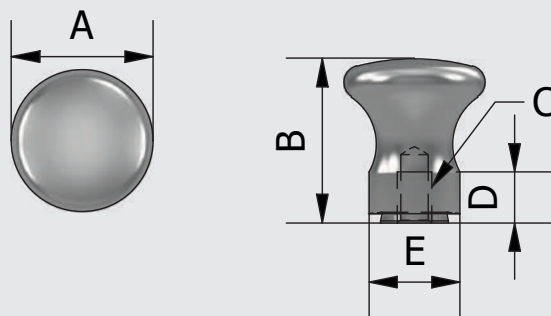
Part Name	A	B	C	D	E
DH303 20-24-M5-F	20	24	M5	7	14
DH303 25-29-M6-F	25	29	M6	9	16
DH303 32-37-M8-F	32	37	M8	12	18

DH303 Series

DH303-M



DH303-F





EQM HYGIENE Stainless Steel Nut & Ring

DHN Series



Part Name	A	B	C	SW
DHN M4	M4	7	12	8
DHN M5	M5	8	12	8
DHN M6	M6	9	14	10
DHN M8	M8	12	18	13
DHN M10	M10	15	20	17

DHRS Series

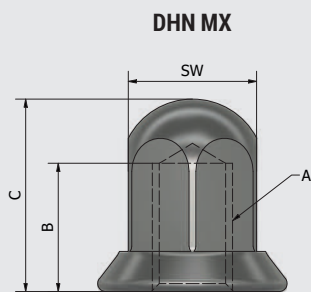


Dertec hygienic nuts and bonded seals combine freedom from dead spaces and sealed bolting areas.

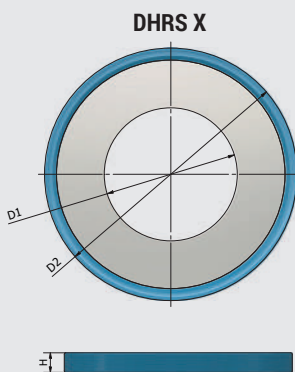
The stainless steel 316 Nuts and Silicon bonded seals offer an easy to clean and antibacterial solution.

Part Name	D1	D2	H
DHRS M4	4,2	10,7	1,8
DHRS M5	5,2	10,7	1,8
DHRS M6	6,2	13,1	1,8
DHRS M8	8,2	16,9	1,8
DHRS M10	10,2	20,9	1,8

DHN Series



DHRS Series





EQMHYGIENE

Optimising food safety

518 Omahu Road
PO Box 2162 Stortford Lodge
Hastings 4153
New Zealand

Freephone: 0800 147 847

Phone: +64 6 878 8475

Fax: +64 6 878 8472

Email: sales@eqm.co.nz

www.eqm.co.nz